



ESTABLISHED 1880

Punches, Dies, & Shear Blades

FOR AMADA MARVEL™ IRONWORKERS

☎ **USA:** 800-451-4342

☎ **International:** 330-296-4342

☎ **Fax:** 800-451-6877

💻 **Visit:** www.clevelandpunch.com

✉ **Email:** sales@clevelandpunch.com

📍 **Address:** 666 Pratt Street, Ravenna, OH 44266

CLEVELAND

PUNCH & DIE COMPANY

ESTABLISHED 1880

THE CLEVELAND ADVANTAGES

Going the Extra Mile and Delivering on Our Promises For Over 140 Years

PREFERRED TOOLING

marvel

AMADA MARVEL, INC.

MANUFACTURER

THE WORLD LEADER IN THE TOOLING INDUSTRY

With over 140 years of experience in the industry, our team at Cleveland Punch & Die is dedicated to support our customer's needs. We have the industry's largest stock inventory and are the recommended supplier for Amada Marvel™ Ironworkers. As the world-class leader in tooling and related components, you can be assured of our commitment to excellence.

marvel
MANUFACTURING COMPANY
SPARTAN® SERIES

THE GREEN TEAM

Our customer service team is here to provide the knowledge and service you deserve and strives to develop long lasting partnerships. We are available by phone, email or online chat 7am - 6pm EST.

WORLD CLASS ENGINEERING

Our Engineering team works hard to design the highest quality punches, dies, shear blades, and custom tooling on the market. Our high quality and innovative tools keep your shop on the leading edge of technology.

CONSISTENT QUALITY

We provide our customers with tooling manufactured from our own proprietary tool steel. By utilizing a consistent raw material and the latest metallurgical heat-treating technology, the tooling you receive from Cleveland Punch & Die is the industry's highest and most consistent quality.

DEPENDABLE DELIVERY

Our commitment to manufacturing innovation enables Cleveland Punch & Die to provide you with prompt shipment on the highest quality tools you need. Fast delivery means increased productivity for your operation.

TABLE OF CONTENTS

Punches, Dies, & Shear Blades For Amada Marvel[®] Ironworkers

1 PUNCHES & DIES

Punches, Dies, Shape Options, & Punch-Easy[®]

2 ACCESSORIES

Punch Stems, Punch Nuts, Wrenches, Quick Change Sleeves, Stripper Inserts, & Die Reducers

3 SHEAR BLADES

Flat Bars, Notchers, Angles, & Bars

4 OVERSIZE TOOLING

Punch Stems, Punches, Punch Bodies, Punch Reducers, Coupling Nuts, Punch Ends, & More

5 CUSTOM APPLICATIONS

Picket, Corner Radius, Offset, Bevel, & Bevel Serrated Dies, & More

7 STOCK PUNCH CHARTS

Stock Round, Square, Hexagon, & Oblong Punch Charts

8 STOCK DIE CHARTS

Stock Round, Square, Hexagon, & Oblong Die Charts

CLEVELAND

PUNCH & DIE COMPANY

ESTABLISHED 1880

PUNCHES & DIES

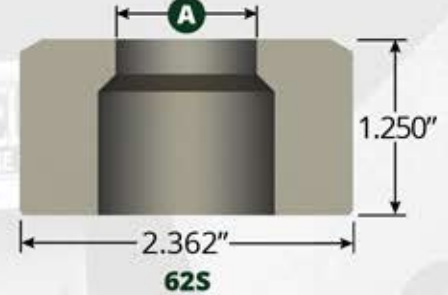
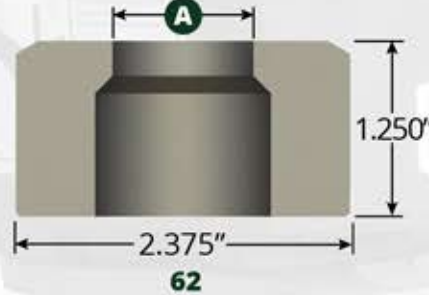
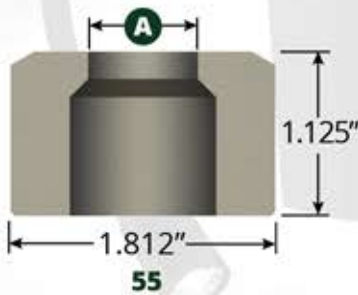
Punches, Dies, Shape Options, & Punch-Easy®



PUNCHES



DIES



SHAPE OPTIONS

Shaped tooling is available upon request. When ordering, please provide size and desired shape. Punches and dies can be keyed and notched to index shape at desired orientation.



SQUARE



RECTANGLE



OBLONG



HEXAGON

PUNCH-EASY®

Our patented lubricant, Punch-Easy®, is formulated to increase tool life during punching and shearing applications.



PART #	DESCRIPTION
PEHP	HALF PINT
PEQTL	QUART
PEGLL	GALLON
PESGL	5 GALLON PAIL
PE55L	55 GALLON DRUM



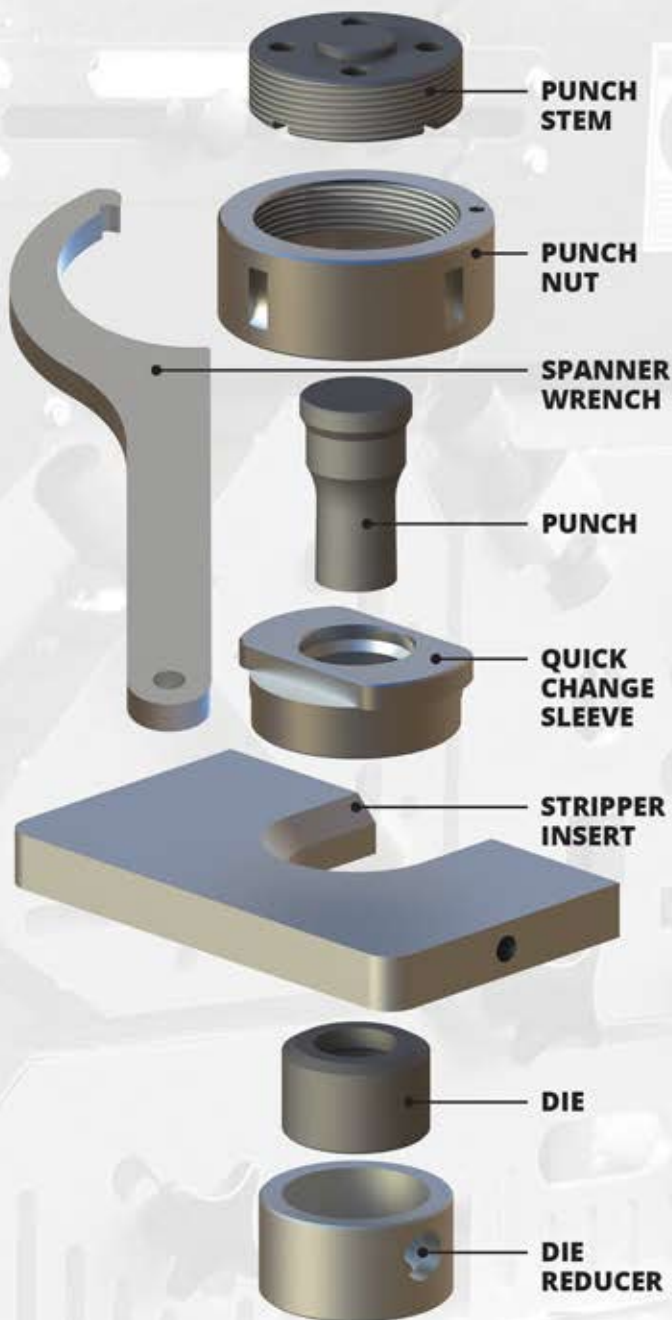
OSHA SAFETY WARNING: It is the users responsibility that the machine and tooling be setup and used in accordance with local and national OSHA laws and ANSI B11.5 standards for safety. Do not permit unqualified personnel to setup or operate the machine. Extreme care should be used at all times.

ACCESSORIES

Punch Stems, Punch Nuts, Wrenches, Quick Change Sleeves, Stripper Inserts, & Die Reducers



ACCESSORIES



AMADA MARVEL™ IRONWORKERS

ACCESSORIES	MSIW60D HKM55	MSIW66S HKM60	MSIW71D HKM65	MSIW93D HKM85
PUNCH STEM	S05S0001	S05S0005	S05S0001	S05S0002
PUNCH NUT	S05C0001	S05C0001	S05C0001	S05C0002
20 QUICK CHANGE SLEEVE	S05Q0001	S05Q0001	S05Q0001	S05Q0003
26 QUICK CHANGE SLEEVE	S05Q0002	-	S05Q0002	S05Q0004
SP51 QUICK CHANGE SLEEVE	S05Q0008	-	S05Q0008	S05Q0016
26 PUNCH REDUCER	-	-	-	-
SP51 PUNCH REDUCER	-	-	-	-
20 STRIPPER INSERT	S05A0054	-	S05A0054	S05A0054
26 STRIPPER INSERT	S05A0055	-	S05A0055	S05A0055
SP51 STRIPPER INSERT	S05A0056	-	S05A0056	S05A0056
62 TO 55 DIE REDUCER	CPDR0007	CPDR0007	CPDR0007	CPDR0007
SPANNER WRENCH	S05A0050	S05A0050	S05A0050	S05A0051

AMADA MARVEL™ IRONWORKERS

ACCESSORIES	MSIW126D(DX) HKM115	MSIW192DX / HKM175	
		STANDARD	QUICK CHANGE
PUNCH STEM	S05S0003	S05S0004	S05S0019
PUNCH NUT	S05C0003	S05C0004	S05C0012
20 QUICK CHANGE SLEEVE	S05Q0010	-	-
26 QUICK CHANGE SLEEVE	S05Q0005	-	S05Q0014
SP51 QUICK CHANGE SLEEVE	S05Q0006	-	S05Q0015
26 PUNCH REDUCER	-	S05R0009	-
SP51 PUNCH REDUCER	-	S05R0010	-
20 STRIPPER INSERT	S05A0054	-	-
26 STRIPPER INSERT	S05A0055	S05A0055	S05A0055
SP51 STRIPPER INSERT	S05A0056	S05A0056	S05A0056
62 TO 55 DIE REDUCER	CPDR0007	CPDR0007	CPDR0007
SPANNER WRENCH	S05A0052	S05A0053	S05A0053

Ask About Hardware For Your Amada Marvel™ Ironworker.

CLEVELAND

PUNCH & DIE COMPANY

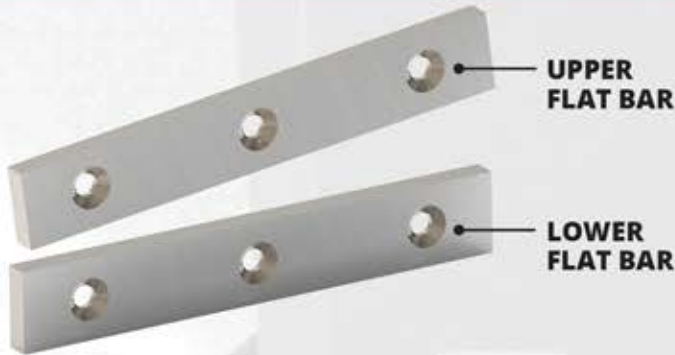
ESTABLISHED 1880

SHEAR BLADES

Flat Bars, Notchers, Angles, & Bars



FLAT BAR



NOTCHER



ANGLE



BAR



AMADA MARVEL™ IRONWORKERS

BLADES	MSIW60D HKM55	MSIW66S HKM60	MSIW71D HKM65	MSIW93D HKM85	MSIW126D(DX) HKM115	MSIW192DX HKM175
FLAT BAR						
UPPER FLAT BAR	S05B0001	S05B0062	S05B0003	S05B0005	S05B0007	S05B0007
LOWER FLAT BAR	S05B0002	S05B0062	S05B0004	S05B0006	S05B0008	S05B0008
NOTCHER						
UPPER NOTCHER	S05B0013	S05B0021	S05B0013	S05B0028	S05B0031	S05B0031
LOWER SIDE NOTCHER (2)	S05B0015	S05B0015	S05B0015	S05B0015	S05B0015	S05B0037
LOWER FRONT NOTCHER	S05B0014	S05B0014	S05B0014	S05B0014	S05B0014	S05B0036
ANGLE						
UPPER ANGLE	S05B0009	S05B0009	S05B0009	S05B0024	S05B0024	S05B0032
LOWER ANGLE (2)	S05B0010	S05B0010	S05B0010	S05B0025	S05B0025	S05B0033
BAR						
RD/SQ SHEAR MOVING	S05B0012	S05B0020	S05B0023	S05B0027	S05B0030	S05B0035
RD/SQ SHEAR STATIONARY	S05B0011	S05B0019	S05B0022	S05B0026	S05B0029	S05B0034

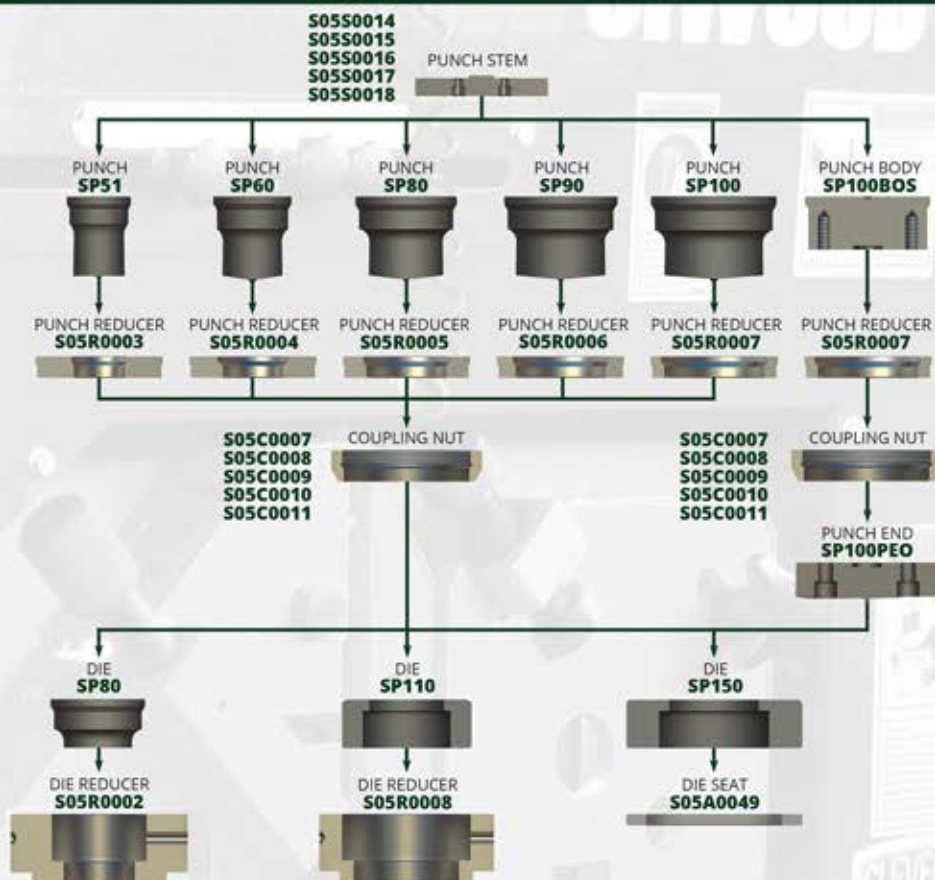
Optional Channel and I-Beam Shear Blades Are Available Upon Request.

OVERSIZE TOOLING

For Amada Marvel™ Ironworkers



CONFIGURATIONS



OVERSIZE TOOLING

The oversized attachment allows for punching sizes greater than the standard machine capability.

Cleveland Punch & Die manufactures all the oversized accessories for Amada Marvel™ Ironworkers.

Oversize tooling is made to order.

OVERSIZE SPANNER WRENCH
S05A0048



STRIPPER INSERT
S05A0057



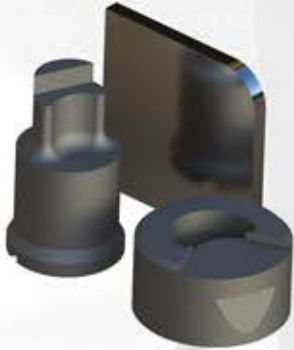
AMADA MARVEL™ IRONWORKERS

DESCRIPTION	MSIW60D HKM55	MSIW66S HKM60	MSIW71D HKM65	MSIW93D HKM85	MSIW126D(DX) HKM115	MSIW192DX HKM175
PUNCH STEM	S05S0014	-	S05S0015	S05S0016	S05S0017	S05S0018
SP51 PUNCH REDUCER	S05R0003	-	S05R0003	S05R0003	S05R0003	S05R0003
SP60 PUNCH REDUCER	S05R0004	-	S05R0004	S05R0004	S05R0004	S05R0004
SP80 PUNCH REDUCER	S05R0005	-	S05R0005	S05R0005	S05R0005	S05R0005
SP90 PUNCH REDUCER	S05R0006	-	S05R0006	S05R0006	S05R0006	S05R0006
SP100 PUNCH REDUCER	S05R0007	-	S05R0007	S05R0007	S05R0007	S05R0007
COUPLING NUT	S05C0007	-	S05C0008	S05C0009	S05C0010	S05C0011
STRIPPER INSERT	S05A0057	-	S05A0057	S05A0057	S05A0057	S05A0057
SP150 TO SP80 DIE REDUCER	S05R0002	-	S05R0002	S05R0002	S05R0002	S05R0002
SP150 TO SP110 DIE REDUCER	S05R0008	-	S05R0008	S05R0008	S05R0008	S05R0008
150MM DIE SEAT	S05A0049	-	S05A0049	S05A0049	S05A0049	S05A0049
SPANNER WRENCH	S05A0048	-	S05A0048	S05A0048	S05A0048	S05A0048



CORNER RADIUS

- Generate a specified radius on the corner of material.



STOCK CORNER RADIUS PUNCHES

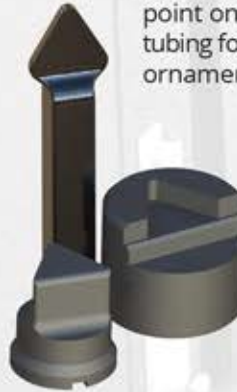
A	20	26
3/8"	•	•
7/16"	•	•
1/2"	•	•
9/16"		•
3/4"		•

STOCK CORNER RADIUS DIES

A	55	62
3/8"	•	•
7/16"	•	•
1/2"		•
9/16"		•
3/4"		•

PICKET

- Generate a spear point on square tubing for fence and ornamental iron.



STOCK PICKET PUNCHES

A	26
1/2"	•
5/8"	•
3/4"	•
1"	•

STOCK PICKET DIES

A	62
1/2"	•
5/8"	•
3/4"	•
1"	•

OFFSET, BEVEL, & BEVEL SERRATED DIES

- Offset dies are used to generate holes close to the inside leg of angle iron, I-beam, and channel.
- Plain bevel dies are recommended when punching material that does not have a uniform thickness.



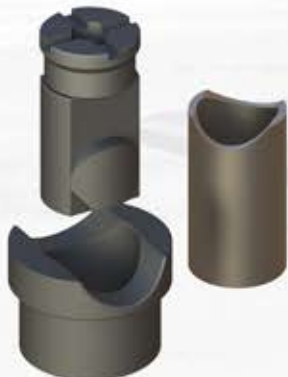
STOCK OFFSET ROUND DIES

A	55	62	A	55	62
9/32"	•	•	21/32"	•	•
11/32"	•	•	11/16"	•	•
13/32"	•	•	23/32"	•	•
7/16"	•	•	3/4"	•	•
15/32"	•	•	25/32"	•	•
1/2"	•	•	13/16"	•	•
17/32"	•	•	27/32"	•	•
9/16"	•	•	7/8"	•	•
19/32"	•	•	29/32"	•	•
5/8"	•	•			

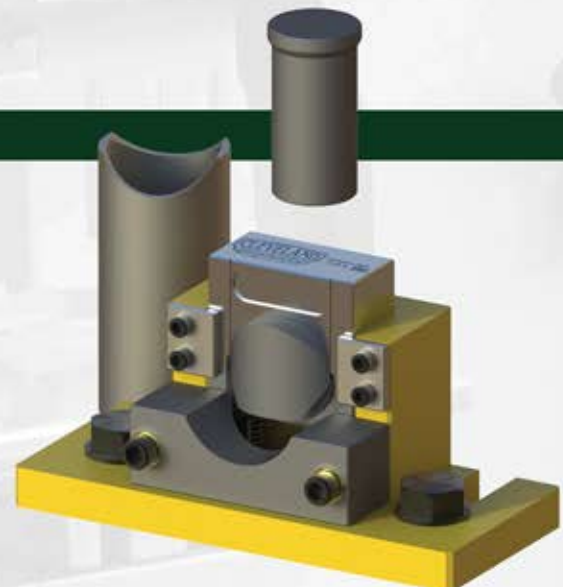
STOCK OFFSET OBLONG DIES

A	55	62
13/32" x 25/32"	•	•
13/32" x 1-1/32"	•	•
15/32" x 25/32"	•	•
15/32" x 1-1/32"	•	•
17/32" x 1-1/32"	•	•
19/32" x 25/32"	•	•
19/32" x 1-1/32"	•	•
23/32" x 1-1/32"	•	•
27/32" x 1-1/32"	•	•

PIPE/TUBE NOTCHER



- Used to notch the end of the pipe or tubing in preparation for fitting and welding.
- Dual pipe notchers can be designed for notching two different sizes of pipe or tube.

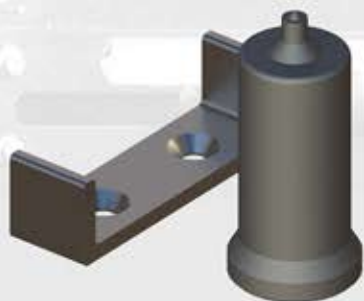


CUSTOM APPLICATIONS

Countersink, Double Step, Keyhole, Lattice Bar, Louver, & Ripping Punch

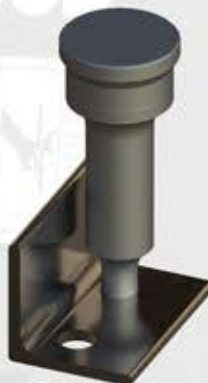


COUNTERSINK



- Punch and form a countersink hole to allow flathead bolts or screws to sit flush with material surface.
- Please provide bolt/screw size and material thickness when ordering.

DOUBLE STEP



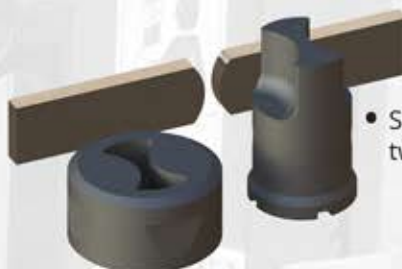
- Punch holes close to the inside leg of angle iron or channel.
- Please provide angle, channel, or I-beam specifications along with hole location when ordering.

KEYHOLE



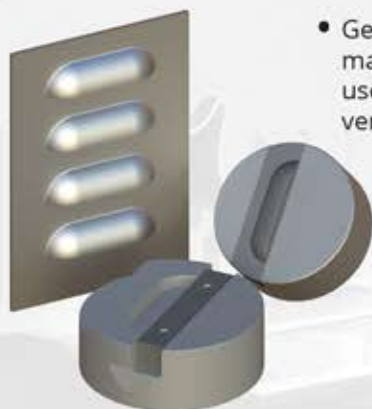
- Used in removable applications where a bolt, chain, or anchor needs to lock in place.
- Common uses include pallet racks, shelving, dump truck bodies, and tow trucks.

LATTICE BAR



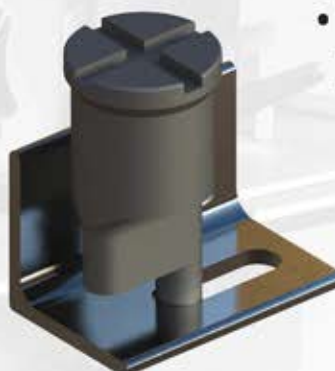
- Shear and generate one or two radii on flat bar material.

LOUVER



- Generate an angled slat in material. Most commonly used to allow for air ventilation.

RIPPING PUNCH



- Produce an elongated hole where the desired length exceeds the machine capacity.



STOCK ROUND PUNCHES

A	20	26
1/8"	•	•
5/32"	•	•
3/16"	•	•
7/32"	•	•
1/4"	•	•
9/32"	•	•
5/16"	•	•
11/32"	•	•
3/8"	•	•
13/32"	•	•
7/16"	•	•
15/32"	•	•
1/2"	•	•
17/32"	•	•
9/16"	•	•
19/32"	•	•
5/8"	•	•
21/32"	•	•
11/16"	•	•
23/32"	•	•
3/4"	•	•
25/32"	•	•
13/16"	•	•
27/32"	•	•
7/8"	•	•
29/32"	•	•
15/16"	•	•
31/32"	•	•
1"	•	•
1-1/32"	•	•
1-1/16"	•	•
1-3/32"	•	•
1-1/8"	•	•
1-5/32"	•	•
1-3/16"	•	•
1-7/32"	•	•
1-1/4"	•	•
1-9/32"	•	•
1-5/16"	•	•
1-11/32"	•	•
1-3/8"	•	•
1-13/32"	•	•
1-7/16"	•	•
1-15/32"	•	•
1-1/2"	•	•
1-17/32"	•	•
1-9/16"	•	•

STOCK SQUARE PUNCHES

A	20	26
7/32"	•	•
1/4"	•	•
9/32"	•	•
5/16"	•	•
11/32"	•	•
3/8"	•	•
13/32"	•	•
7/16"	•	•
15/32"	•	•
1/2"	•	•
17/32"	•	•
9/16"	•	•
19/32"	•	•
5/8"	•	•
21/32"	•	•
11/16"	•	•
23/32"	•	•
3/4"	•	•
25/32"	•	•
13/16"	•	•
7/8"	•	•
15/16"	•	•
1"	•	•
1-1/16"	•	•

STOCK HEX PUNCHES

A	20	26
11/32"	•	•
3/8"	•	•
13/32"	•	•
7/16"	•	•
15/32"	•	•
1/2"	•	•
17/32"	•	•
9/16"	•	•
19/32"	•	•
5/8"	•	•
21/32"	•	•
11/16"	•	•
23/32"	•	•
3/4"	•	•
25/32"	•	•
13/16"	•	•
27/32"	•	•
7/8"	•	•
29/32"	•	•
15/16"	•	•
31/32"	•	•
1"	•	•
1-1/32"	•	•
1-1/16"	•	•
1-3/32"	•	•
1-1/8"	•	•
1-5/32"	•	•
1-3/16"	•	•
1-7/32"	•	•
1-1/4"	•	•

STOCK OBLONG PUNCHES

A	20	26	A	20	26
3/16" x 1"	•	•	17/32" x 1-1/4"	•	•
7/32" x 7/16"	•	•	17/32" x 1-1/2"	•	•
7/32" x 1"	•	•	9/16" x 3/4"	•	•
1/4" x 1/2"	•	•	9/16" x 1"	•	•
1/4" x 3/4"	•	•	9/16" x 1-1/16"	•	•
1/4" x 1"	•	•	9/16" x 1-1/8"	•	•
9/32" x 9/16"	•	•	9/16" x 1-1/4"	•	•
9/32" x 3/4"	•	•	9/16" x 1-1/2"	•	•
9/32" x 1"	•	•	5/8" x 1"	•	•
5/16" x 1/2"	•	•	5/8" x 1-1/4"	•	•
5/16" x 5/8"	•	•	5/8" x 1-1/2"	•	•
5/16" x 3/4"	•	•	11/16" x 1"	•	•
5/16" x 1"	•	•	11/16" x 1-1/16"	•	•
5/16" x 1-1/16"	•	•	11/16" x 1-1/8"	•	•
5/16" x 1-1/4"	•	•	11/16" x 1-1/4"	•	•
5/16" x 1-1/2"	•	•	11/16" x 1-1/2"	•	•
11/32" x 11/16"	•	•	3/4" x 1"	•	•
11/32" x 1"	•	•	3/4" x 1-1/4"	•	•
3/8" x 1/2"	•	•	3/4" x 1-1/2"	•	•
3/8" x 3/4"	•	•	13/16" x 1"	•	•
3/8" x 1"	•	•	13/16" x 1-1/16"	•	•
3/8" x 1-1/4"	•	•	13/16" x 1-1/8"	•	•
3/8" x 1-1/2"	•	•	13/16" x 1-1/4"	•	•
13/32" x 13/16"	•	•	13/16" x 1-1/2"	•	•
13/32" x 1"	•	•	7/8" x 1-1/4"	•	•
13/32" x 1-1/4"	•	•	7/8" x 1-1/2"	•	•
7/16" x 9/16"	•	•	15/16" x 1-1/16"	•	•
7/16" x 3/4"	•	•	15/16" x 1-1/8"	•	•
7/16" x 7/8"	•	•	15/16" x 1-1/4"	•	•
7/16" x 1"	•	•	15/16" x 1-1/2"	•	•
7/16" x 1-1/16"	•	•	15/16" x 1-9/16"	•	•
7/16" x 1-1/4"	•	•	1" x 1-1/4"	•	•
7/16" x 1-1/2"	•	•	1" x 1-1/2"	•	•
15/32" x 1"	•	•	1" x 1-9/16"	•	•
1/2" x 3/4"	•	•	1-1/16" x 1-1/4"	•	•
1/2" x 1"	•	•	1-1/16" x 1-1/2"	•	•
1/2" x 1-1/16"	•	•	1-1/16" x 1-1/2"	•	•
1/2" x 1-1/4"	•	•	1-1/16" x 1-9/16"	•	•
1/2" x 1-1/2"	•	•	1-1/8" x 1-1/2"	•	•
17/32" x 1"	•	•			

KEYWAY OPTIONS

Shaped punches can be located with a single or cross keyway on the head of the punch.

SINGLE KEYWAY



CROSS KEYWAY



A36 MILD STEEL CLEARANCE

MATERIAL THICKNESS	DIE CLEARANCE
1/4" - 15/32"	1/32"
1/2" - 23/32"	1/16"
3/4" - 31/32"	3/32"
1" and over	1/8"

STOCK DIE CHARTS

Stock Round, Square, Hexagon, & Oblong Die Charts



STOCK ROUND DIES			
A	55	62	62S
5/32"	•		
3/16"	•	•	
7/32"	•	•	
1/4"	•	•	
9/32"	•	•	
5/16"	•	•	
11/32"	•	•	
3/8"	•	•	
13/32"	•	•	
7/16"	•	•	
15/32"	•	•	
1/2"	•	•	
17/32"	•	•	
9/16"	•	•	
19/32"	•	•	
5/8"	•	•	
21/32"	•	•	
11/16"	•	•	
23/32"	•	•	
3/4"	•	•	
25/32"	•	•	
13/16"	•	•	
27/32"	•	•	
7/8"	•	•	
29/32"	•	•	
15/16"	•	•	
31/32"	•	•	
1"	•	•	
1-1/32"	•	•	
1-1/16"	•	•	
1-3/32"	•	•	
1 1/8"	•	•	
1-5/32"	•	•	
1-3/16"	•	•	
1-7/32"	•	•	
1-1/4"	•	•	
1-9/32"	•	•	•
1 5/16"	•	•	•
1-11/32"	•	•	•
1 3/8"	•	•	•
1-13/32"	•	•	•
1-7/16"	•	•	•
1-15/32"	•	•	•
1-1/2"	•	•	•
1-17/32"	•	•	•
1-9/16"	•	•	•
1-19/32"	•	•	•
1-5/8"	•	•	•

STOCK SQUARE DIES		
A	55	62
1/4"	•	
9/32"	•	
5/16"	•	
11/32"	•	•
3/8"	•	•
13/32"	•	•
7/16"	•	•
15/32"	•	•
1/2"	•	•
17/32"	•	•
9/16"	•	•
19/32"	•	•
5/8"	•	•
21/32"	•	•
11/16"	•	•
23/32"	•	•
3/4"	•	•
25/32"	•	•
13/16"	•	•
27/32"	•	•
7/8"	•	•
29/32"	•	•
15/16"	•	•
31/32"	•	•
1"	•	•
1-1/32"	•	•
1-1/16"	•	•
1-3/32"	•	•
1-1/8"	•	•

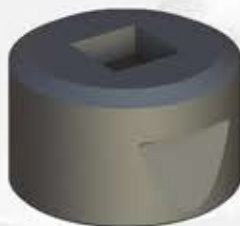
STOCK HEX DIES		
A	55	62
3/8"	•	•
13/32"	•	•
7/16"	•	•
15/32"	•	•
1/2"	•	•
17/32"	•	•
9/16"	•	•
19/32"	•	•
5/8"	•	•
21/32"	•	•
11/16"	•	•
23/32"	•	•
3/4"	•	•
25/32"	•	•
13/16"	•	•
27/32"	•	•
7/8"	•	•
29/32"	•	•
15/16"	•	•
31/32"	•	•
1"	•	•
1-1/32"	•	•
1-1/16"	•	•
1-3/32"	•	•
1-1/8"	•	•
1-5/32"	•	•
1-3/16"	•	•
1-7/32"	•	•
1-1/4"	•	•
1-9/32"	•	•
1-5/8"	•	•

STOCK OBLONG DIES					
A	55	62	A	55	62
7/32" x 25/32"	•	•	5/8" x 1-5/16"	•	•
7/32" x 1-1/32"	•	•	5/8" x 1-9/16"	•	•
1/4" x 15/32"	•	•	21/32" x 1-1/32"	•	•
1/4" x 1-1/32"	•	•	21/32" x 1-9/32"	•	•
9/32" x 17/32"	•	•	21/32" x 1-17/32"	•	•
9/32" x 25/32"	•	•	11/16" x 1-1/16"	•	•
9/32" x 1-1/32"	•	•	11/16" x 1-5/16"	•	•
5/16" x 19/32"	•	•	11/16" x 1-9/16"	•	•
5/16" x 25/32"	•	•	23/32" x 1-1/32"	•	•
5/16" x 1-1/32"	•	•	23/32" x 1-3/32"	•	•
11/32" x 17/32"	•	•	23/32" x 1-5/32"	•	•
11/32" x 21/32"	•	•	23/32" x 1-9/32"	•	•
11/32" x 25/32"	•	•	23/32" x 1-17/32"	•	•
11/32" x 1-1/32"	•	•	3/4" x 1-1/16"	•	•
11/32" x 1-3/32"	•	•	3/4" x 1-1/8"	•	•
11/32" x 1-9/32"	•	•	3/4" x 1-3/16"	•	•
11/32" x 1-17/32"	•	•	3/4" x 1-5/16"	•	•
3/8" x 23/32"	•	•	3/4" x 1-9/16"	•	•
3/8" x 1-1/32"	•	•	25/32" x 1-1/32"	•	•
3/8" x 1-5/16"	•	•	25/32" x 1-9/32"	•	•
13/32" x 17/32"	•	•	25/32" x 1-17/32"	•	•
13/32" x 25/32"	•	•	13/16" x 1-1/16"	•	•
13/32" x 1-1/32"	•	•	13/16" x 1-5/16"	•	•
13/32" x 1-9/32"	•	•	13/16" x 1-9/16"	•	•
13/32" x 1-17/32"	•	•	27/32" x 1-1/32"	•	•
7/16" x 7/32"	•	•	27/32" x 1-3/32"	•	•
7/16" x 1-1/32"	•	•	27/32" x 1-5/32"	•	•
7/16" x 1-9/32"	•	•	27/32" x 1-9/32"	•	•
7/16" x 1-5/16"	•	•	27/32" x 1-17/32"	•	•
15/32" x 19/32"	•	•	7/8" x 1-1/16"	•	•
15/32" x 25/32"	•	•	7/8" x 1-1/8"	•	•
15/32" x 29/32"	•	•	7/8" x 1-3/16"	•	•
15/32" x 1-1/32"	•	•	7/8" x 1-5/16"	•	•
15/32" x 1-3/32"	•	•	7/8" x 1-9/16"	•	•
15/32" x 1-9/32"	•	•	29/32" x 1-9/32"	•	•
15/32" x 1-17/32"	•	•	29/32" x 1-17/32"	•	•
1/2" x 1-1/32"	•	•	15/16" x 1-5/16"	•	•
1/2" x 1-1/16"	•	•	15/16" x 1-9/16"	•	•
1/2" x 1-5/16"	•	•	31/32" x 1-3/32"	•	•
17/32" x 25/32"	•	•	31/32" x 1-5/32"	•	•
17/32" x 1-1/32"	•	•	31/32" x 1-9/32"	•	•
17/32" x 1-3/32"	•	•	31/32" x 1-17/32"	•	•
17/32" x 1-9/32"	•	•	1" x 1-1/8"	•	•
17/32" x 1-17/32"	•	•	1" x 1-3/16"	•	•
9/16" x 13/16"	•	•	1" x 1-5/16"	•	•
9/16" x 1-1/32"	•	•	1" x 1-9/16"	•	•
9/16" x 1-1/16"	•	•	1" x 1-5/8"	•	•
9/16" x 1-1/8"	•	•	1-1/32" x 1-9/32"	•	•
9/16" x 1-3/16"	•	•	1-1/32" x 1-17/32"	•	•
9/16" x 1-9/32"	•	•	1-1/32" x 1-19/32"	•	•
9/16" x 1-5/16"	•	•	1-1/16" x 1-5/16"	•	•
9/16" x 1-17/32"	•	•	1-1/16" x 1-9/16"	•	•
9/16" x 1-9/16"	•	•	1-1/16" x 1-5/8"	•	•
19/32" x 25/32"	•	•	1-3/32" x 1-9/32"	•	•
19/32" x 1-1/32"	•	•	1-3/32" x 1-11/32"	•	•
19/32" x 1-3/32"	•	•	1-3/32" x 1-17/32"	•	•
19/32" x 1-5/32"	•	•	1-1/8" x 1-5/16"	•	•
19/32" x 1-9/32"	•	•	1-1/8" x 1-3/8"	•	•
19/32" x 1-17/32"	•	•	1-1/8" x 1-9/16"	•	•
5/8" x 13/16"	•	•	1-1/8" x 1-5/8"	•	•
5/8" x 1-1/16"	•	•	1-5/32" x 1-17/32"	•	•
5/8" x 1-1/8"	•	•	1-3/16" x 1-9/16"	•	•
5/8" x 1-3/16"	•	•			

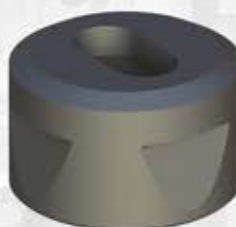
NOTCH OPTIONS

Shaped dies can be located with one or two notches.

ONE NOTCH



TWO NOTCHES





ESTABLISHED 1880

☎ **USA:** 800-451-4342

☎ **International:** 330-296-4342

☎ **Fax:** 800-451-6877

💻 **Visit:** www.clevelandpunch.com

✉ **Email:** sales@clevelandpunch.com

📍 **Address:** 666 Pratt Street, Ravenna, OH 44266

THE WORLD LEADER IN THE TOOLING INDUSTRY

Be a Part of Our Industry's Largest Online Community

Our Instagram, Facebook, and YouTube pages are full of valuable information on how to fully utilize your punching machine. While you're there, share your work and develop new relationships with others like yourself.

📷 ***clevelandpunchdie***

📘 ***cleveland.punch***

📺 ***Cleveland Punch & Die Company***

Copyright © 2019 Cleveland Punch & Die Company. All rights, including without limitation all copyrights, in and to this catalog are owned solely and exclusively by Cleveland Punch & Die Company. Reproduction, distribution, or transmission of any part of this catalog, by any means or in any form of media, without the prior express written consent of Cleveland Punch & Die Company is strictly prohibited. All rights reserved.

Amada Marvel™ is a trademark of Amada Marvel™, Inc. Use of Amada Marvel™ trademark and name in this catalog is for informational purposes only. It is the intention of Cleveland Punch & Die Company to recognize and provide credit to the fullest extent possible.

Cleveland Punch & Die Co.

PUNCHES • DIES • SHEAR BLADES
for PIRANHA™ IRONWORKERS



phone 1-800-451-4342
fax 1-800-451-6877

666 Pratt St. • Box 769 • Ravenna, Ohio 44266 • www.clevelandpunch.com

CLEVELAND PUNCH & DIE COMPANY

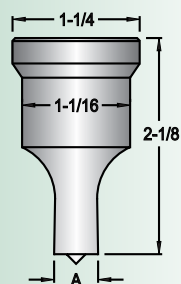
Piranha™ Punches & Dies Dimensions and Specifications

Below are our standard Piranha™ punches and dies. Refer to our **Cross Reference Catalog** for the proper tooling to fit your machine.

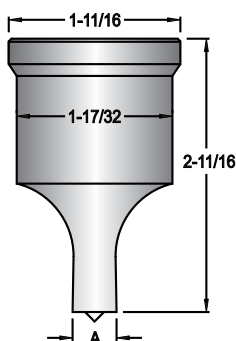
STOCK PUNCHES & DIES ARE SHIPPED THE SAME DAY ORDERED!

***MADE TO ORDER SIZES CAN BE SHIPPED IN AS LITTLE AS 24 HOURS!**

F-16
IN STOCK

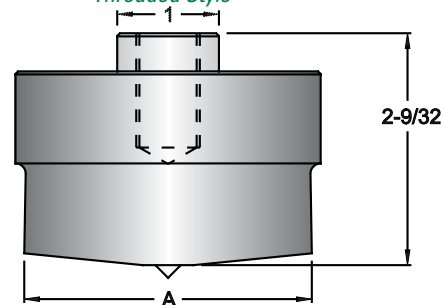


F-26
IN STOCK

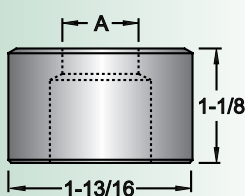


PIRANHA™ HEAVY DUTY PUNCHES*

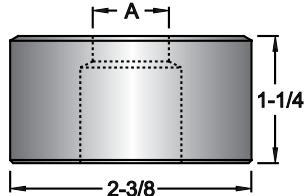
Threaded Style



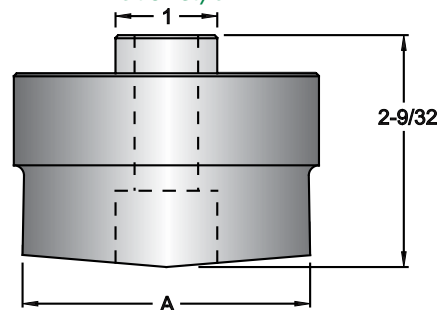
F-55
IN STOCK



F-62
IN STOCK

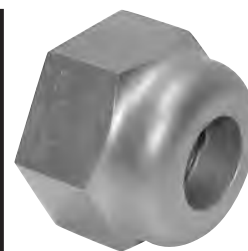


Bolt On Style



The following tables list our stock Piranha™ Coupling Nuts. Made to order coupling nuts can be shipped in as little as 24 hours. Refer to our **Cross Reference Catalog** for stock punches & dies and recommended manufactures' tooling.

COUPLING NUT NUMBER	OLD COUPLING NUT NUMBER	HEXAGON SIZE	THREADS PER INCH	LARGEST O.D.	THREAD DIAMETER	BORE	LENGTH	USE WITH PUNCH FIGURE NUMBER
CN-56	330406	2	12	2-5/16	1-3/8	1-5/64	1-3/8	16
CN-26	C-4B	2-1/2	10	2-7/8	2	1.537	1-5/8	26
CN-26A	PW-7	2-1/2	12	2-7/8	1-7/8	1.570	1-5/8	26 with 1-9/16 point size
CN-26B	C-4D	2-1/2	10	2-7/8	2	1.570	1-5/8	26 with 1-9/16 point size
CN-26P	4433408	N/A	12	2-5/8	1-7/8	1.570	1-3/8	26 with 1-9/16 point size



Returns

Returned tooling will not be accepted without prior authorization. No credit issued on used or damaged tooling. Special tooling can not be returned. Returned tooling must be shipped prepaid. Restocking charge is 25% of list price.

Shortages

All claims must be made within ten days of invoice date.

Terms

F.O.B. Ravenna, Ohio
Net 30 days

FOR A-36 AND MILD STEEL PLATE:

1/4" up to 1/2"	1/32" clearance
1/2" up to 3/4"	1/16" clearance
3/4" up to 1"	3/32" clearance
1" and over	1/8" clearance

FOR MORE HOLES PER DOLLAR CALL
1-800-451-4342

FAX 1-800-451-6877

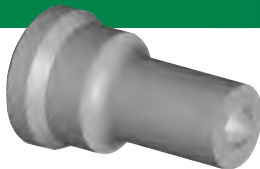
www.clevelandpunch.com

GREEN TEAM TIP:

Good results are obtained by using the following chart to determine die clearance.

MADE TO ORDER SIZES CAN BE SHIPPED IN AS LITTLE AS 24 HOURS!

STOCK
ROUND PUNCHES
FIGURE NUMBER



● Represents stock round sizes

STOCK
ROUND DIES
FIGURE NUMBER



Size	16	26
1/8	●	
5/32	●	●
3/16	●	●
7/32	●	●
1/4	●	●
9/32	●	●
5/16	●	●
11/32	●	●
3/8	●	●
13/32	●	●
7/16	●	●
15/32	●	●
1/2	●	●
17/32	●	●
9/16	●	●
19/32	●	●
5/8	●	●
21/32	●	●
11/16	●	●
23/32	●	●
3/4	●	●
25/32	●	●
13/16	●	●
27/32	●	●
7/8	●	●
29/32	●	●
15/16	●	●
31/32	●	●
1	●	●
1-1/32	●	●
1-1/16	●	●
1-3/32		●
1-1/8	●	●
1-5/32		●
1-3/16		●
1-7/32		●
1-1/4		●
1-9/32		●
1-5/16		●
1-11/32		●
1-3/8		●
1-13/32		●
1-7/16		●
1-15/32		●
1-1/2		●
1-17/32		●
1-9/16		●

The following tables list our stock round punches and dies for Piranha™ Ironworkers. Refer to our **Cross Reference Catalog** for the proper tooling to fit your machine.

GREEN TEAM TIP:

Punches last longer when used with a punch lubricant. For maximum punch life, use Cleveland Punch & Die's patented punch lubricant - **Punch Easy**.

PLEASE NOTE:

We stock 1/32" & 1/16" clearance die sizes. Other made to order die sizes such as clearances recommended for gauge stock, can be shipped in as little as 24 hours.

OSHA WARNING

It is the user's responsibility that the machine and tooling be set up and used in accordance with local and national OSHA Laws and ANSI B11.5 standards for safety.

Do not permit unqualified personnel to setup or operate the machine. Extreme care should be used at all times.

Size	55	62
5/32	●	
3/16	●	●
7/32	●	●
1/4	●	●
9/32	●	●
5/16	●	●
11/32	●	●
3/8	●	●
13/32	●	●
7/16	●	●
15/32	●	●
1/2	●	●
17/32	●	●
9/16	●	●
19/32	●	●
5/8	●	●
21/32	●	●
11/16	●	●
23/32	●	●
3/4	●	●
25/32	●	●
13/16	●	●
27/32	●	●
7/8	●	●
29/32	●	●
15/16	●	●
31/32	●	●
1	●	●
1-1/32	●	●
1-1/16	●	●
1-3/32	●	●
1-1/8	●	●
1-5/32	●	●
1-3/16	●	●
1-7/32	●	●
1-1/4	●	●
1-9/32	●	●
1-5/16	●	●
1-11/32	●	●
1-3/8	●	●
1-13/32	●	●
1-7/16		●
1-15/32		●
1-1/2		●
1-17/32		●
1-9/16		●
1-19/32		●
1-5/8		●

ROUND PIRANHA™ TOOLING

CLEVELAND PUNCH & DIE COMPANY

The following tables list our stock oblong punches and dies for Piranha™ Ironworkers. Refer to our **Cross Reference Catalog** for the proper tooling to fit your machine.

STOCK PUNCHES & DIES ARE SHIPPED THE SAME DAY ORDERED!

MADE TO ORDER SIZES CAN BE SHIPPED
IN AS LITTLE AS 24 HOURS!



● Represents stock oblong sizes

V-Groove in Head of Punch

Oblong punches are stocked without v-groove in the head. V-Groove can be furnished on request.



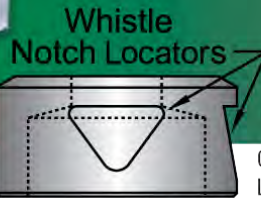
FIGURE NUMBER			FIGURE NUMBER			FIGURE NUMBER		
Size	16	26	Size	16	26	Size	16	26
3/16 x 3/4	●		7/16 x 9/16	●	●	11/16 x 1-1/8	●	●
3/16 x 1	●	●	7/16 x 3/4	●	●	11/16 x 1-1/4		●
7/32 x 7/16	●		7/16 x 7/8	●	●	11/16 x 1-1/2		●
7/32 x 1	●	●	7/16 x 1	●	●	3/4 x 1	●	●
1/4 x 1/2	●	●	7/16 x 1-1/16	●	●	3/4 x 1-1/4		●
1/4 x 3/4	●	●	7/16 x 1-1/4		●	3/4 x 1-1/2		●
1/4 x 1	●	●	7/16 x 1-1/2		●	13/16 x 1	●	●
9/32 x 9/16	●	●	15/32 x 1	●	●	13/16 x 1-1/16	●	●
9/32 x 3/4	●	●	1/2 x 3/4	●	●	13/16 x 1-1/8	●	●
9/32 x 1	●	●	1/2 x 1	●	●	13/16 x 1-1/4		●
5/16 x 1/2	●	●	1/2 x 1-1/16	●	●	13/16 x 1-1/2		●
5/16 x 5/8	●	●	1/2 x 1-1/4		●	7/8 x 1-1/4		●
5/16 x 3/4	●	●	1/2 x 1-1/2		●	7/8 x 1-1/2		●
5/16 x 1	●	●	17/32 x 1	●	●	15/16 x 1-1/16	●	●
5/16 x 1-1/16	●	●	17/32 x 1-1/4		●	15/16 x 1-1/8	●	●
5/16 x 1-1/4		●	17/32 x 1-1/2		●	15/16 x 1-1/4		●
5/16 x 1-1/2		●	9/16 x 3/4	●	●	15/16 x 1-1/2		●
11/32 x 11/16	●	●	9/16 x 1	●	●	15/16 x 1-9/16		●
11/32 x 1	●	●	9/16 x 1-1/16	●	●	1 x 1-1/4		●
3/8 x 1/2	●	●	9/16 x 1-1/8	●	●	1 x 1-1/2		●
3/8 x 3/4	●	●	9/16 x 1-1/4		●	1 x 1-9/16		●
3/8 x 1	●	●	9/16 x 1-1/2		●	1-1/16 x 1-1/4		●
3/8 x 1-1/4		●	5/8 x 1	●	●	1-1/16 x 1-5/16		●
3/8 x 1-1/2		●	5/8 x 1-1/4		●	1-1/16 x 1-1/2		●
13/32 x 13/16	●	●	5/8 x 1-1/2		●	1-1/16 x 1-9/16		●
13/32 x 1	●	●	11/16 x 1	●	●	1-1/8 x 1-1/2		●
13/32 x 1-1/4		●	11/16 x 1-1/16	●	●			

GREEN TEAM TIP:

Punch sizes larger than body diameter may require special coupling nut.



FOR MORE HOLES PER DOLLAR CALL
1•800•451•4342
 FAX 1•800•451•6877
www.clevelandpunch.com



MADE TO ORDER SIZES CAN BE SHIPPED IN AS LITTLE AS 24 HOURS!

— Represents stock oblong sizes

Oblong dies are stocked without locators.
 Locators can be furnished on request.

FIGURE NUMBER			FIGURE NUMBER			FIGURE NUMBER			FIGURE NUMBER		
Size	55	62	Size	55	62	Size	55	62	Size	55	62
7/32 x 25/32	—		15/32 x 25/32	—	—	5/8 x 1-3/16	—	—	7/8 x 1-3/16	—	—
7/32 x 1-1/32	—	—	15/32 x 29/32	—	—	5/8 x 1-5/16		—	7/8 x 1-5/16		—
15/64 x 29/64	—		15/32 x 1-1/32	—	—	5/8 x 1-9/16		—	7/8 x 1-9/16		—
1/4 x 15/32	—		15/32 x 1-3/32	—	—	21/32 x 1-1/32	—	—	29/32 x 1-9/32		—
1/4 x 1-1/32	—	—	15/32 x 1-9/32		—	21/32 x 1-9/32		—	29/32 x 1-17/32		—
9/32 x 17/32	—	—	15/32 x 1-17/32		—	21/32 x 1-17/32		—	15/16 x 1-5/16		—
9/32 x 25/32	—	—	1/2 x 1-1/32	—	—	11/16 x 1-1/16	—	—	15/16 x 1-9/16		—
9/32 x 1-1/32	—	—	1/2 x 1-1/16	—	—	11/16 x 1-5/16		—	31/32 x 1-3/32	—	—
5/16 x 19/32	—	—	1/2 x 1-5/16		—	11/16 x 1-9/16		—	31/32 x 1-5/32	—	—
5/16 x 25/32	—	—	17/32 x 25/32	—	—	23/32 x 1-1/32	—	—	31/32 x 1-9/32		—
5/16 x 1-1/32	—	—	17/32 x 1-1/32	—	—	23/32 x 1-3/32	—	—	31/32 x 1-17/32		—
11/32 x 17/32	—	—	17/32 x 1-3/32	—	—	23/32 x 1-5/32	—	—	1 x 1-1/8	—	—
11/32 x 21/32	—	—	17/32 x 1-9/32		—	23/32 x 1-9/32		—	1 x 1-3/16	—	—
11/32 x 25/32	—	—	17/32 x 1-17/32		—	23/32 x 1-17/32		—	1 x 1-5/16		—
11/32 x 1-1/32	—	—	9/16 x 13/16	—	—	3/4 x 1-1/16	—	—	1 x 1-9/16		—
11/32 x 1-3/32	—	—	9/16 x 1-1/32	—	—	3/4 x 1-1/8	—	—	1 x 1-5/8		—
11/32 x 1-9/32		—	9/16 x 1-1/16	—	—	3/4 x 1-3/16	—	—	1-1/32 x 1-9/32		—
11/32 x 1-17/32		—	9/16 x 1-1/8	—	—	3/4 x 1-5/16		—	1-1/32 x 1-17/32		—
3/8 x 23/32	—	—	9/16 x 1-3/16	—	—	3/4 x 1-9/16		—	1-1/32 x 1-19/32		—
3/8 x 1-1/32	—	—	9/16 x 1-9/32		—	25/32 x 1-1/32	—	—	1-1/16 x 1-5/16		—
3/8 x 1-5/16		—	9/16 x 1-5/16		—	25/32 x 1-9/32		—	1-1/16 x 1-9/16		—
13/32 x 17/32	—	—	9/16 x 1-17/32		—	25/32 x 1-17/32		—	1-1/16 x 1-5/8		—
13/32 x 25/32	—	—	9/16 x 1-9/16		—	13/16 x 1-1/16	—	—	1-3/32 x 1-9/32		—
13/32 x 1-1/32	—	—	19/32 x 25/32	—	—	13/16 x 1-5/16		—	1-3/32 x 1-11/32		—
13/32 x 1-9/32		—	19/32 x 1-1/32	—	—	13/16 x 1-9/16		—	1-3/32 x 1-17/32		—
13/32 x 1-17/32		—	19/32 x 1-3/32	—	—	27/32 x 1-1/32	—	—	1-1/8 x 1-5/16		—
7/16 x 27/32	—	—	19/32 x 1-5/32	—	—	27/32 x 1-3/32	—	—	1-1/8 x 1-3/8		—
7/16 x 1-1/32	—	—	19/32 x 1-9/32		—	27/32 x 1-5/32	—	—	1-1/8 x 1-9/16		—
7/16 x 1-9/32		—	19/32 x 1-17/32		—	27/32 x 1-9/32		—	1-1/8 x 1-5/8		—
7/16 x 1-5/16		—	5/8 x 13/16	—	—	27/32 x 1-17/32		—	1-5/32 x 1-17/32		—
15/32 x 19/32	—	—	5/8 x 1-1/16	—	—	7/8 x 1-1/16	—	—	1-3/16 x 1-9/16		—
			5/8 x 1-1/8	—	—	7/8 x 1-1/8	—	—			

OBLONG PIRANHA™ DIES

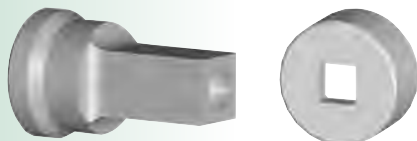
CLEVELAND PUNCH & DIE COMPANY

The following tables list our stock square and hexagon punches and dies for Piranha™ Ironworkers. Refer to our **Cross Reference Catalog** for the proper tooling to fit your machine.

STOCK PUNCHES & DIES ARE SHIPPED THE SAME DAY ORDERED!
MADE TO ORDER SIZES CAN BE SHIPPED IN AS LITTLE AS 24 HOURS!

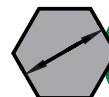
V-Groove in Head of Punch, Whistle Notch Locators on Die

Square and hexagon punches are stocked without v-groove in the heads. Dies are stocked without locators. They can be furnished on request.

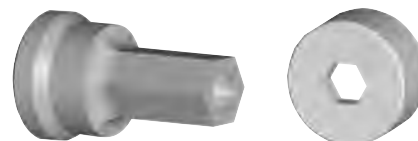


■ Represents stock square sizes

	STOCK SQUARE PUNCHES		STOCK SQUARE DIES	
	FIGURE NUMBER		FIGURE NUMBER	
Size	16	26	55	62
7/32	■			
1/4	■		■	
9/32	■		■	
5/16	■	■	■	
11/32	■	■	■	■
3/8	■	■	■	■
13/32	■	■	■	■
7/16	■	■	■	■
15/32	■	■	■	■
1/2	■	■	■	■
17/32	■	■	■	■
9/16	■	■	■	■
19/32	■	■	■	■
5/8	■	■	■	■
21/32	■	■	■	■
11/16	■	■	■	■
23/32	■	■	■	■
3/4	■	■	■	■
25/32	■	■	■	■
13/16	■	■	■	■
27/32		■	■	■
7/8		■	■	■
29/32		■	■	■
15/16		■	■	■
31/32		■		■
1		■		■
1-1/32		■		■
1-1/16		■		■
1-3/32				■
1-1/8				■



Hexagon punch and die sizes are measured from flat to flat.



◆ Represents stock hexagon sizes

	STOCK HEXAGON PUNCHES		STOCK HEXAGON DIES	
	FIGURE NUMBER		FIGURE NUMBER	
Size	16	26	55	62
11/32	◆	◆		
3/8	◆	◆	◆	◆
13/32	◆	◆	◆	◆
7/16	◆	◆	◆	◆
15/32	◆	◆	◆	◆
1/2	◆	◆	◆	◆
17/32	◆	◆	◆	◆
9/16	◆	◆	◆	◆
19/32	◆	◆	◆	◆
5/8	◆	◆	◆	◆
21/32	◆	◆	◆	◆
11/16	◆	◆	◆	◆
23/32	◆	◆	◆	◆
3/4	◆	◆	◆	◆
25/32	◆	◆	◆	◆
13/16	◆	◆	◆	◆
27/32		◆	◆	◆
7/8		◆	◆	◆
29/32		◆		◆
15/16		◆		◆
31/32		◆		◆
1		◆		◆
1-1/32		◆		◆
1-1/16		◆		◆
1-3/32		◆		◆
1-1/8		◆		◆
1-5/32		◆		◆
1-3/16		◆		◆
1-7/32		◆		◆
1-1/4		◆		◆
1-9/32				◆
1-5/16				◆

GREEN TEAM TIP:

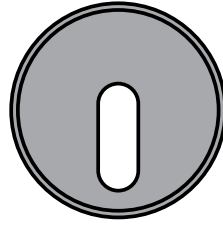
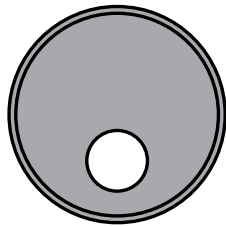
Punch sizes larger than body diameter may require special coupling nut.

FOR MORE HOLES PER DOLLAR CALL
1•800•451•4342
 FAX 1•800•451•6877
 www.clevelandpunch.com

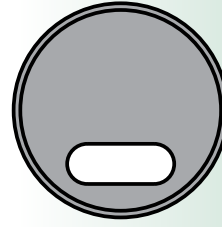
The following table lists our stock offset dies-Style 128 for Piranha Ironworkers. Refer to our **Cross Reference Catalog** for the proper tooling to fit your machine.

MADE TO ORDER SIZES CAN BE SHIPPED IN AS LITTLE AS 24 HOURS!

STYLE 128 OFFSET FLAT TOP (ECCENTRIC) DIES



POSITION "A"



POSITION "B"
 IN STOCK

STOCK ROUND OFFSET DIES STYLE 128

● Represents stock round sizes

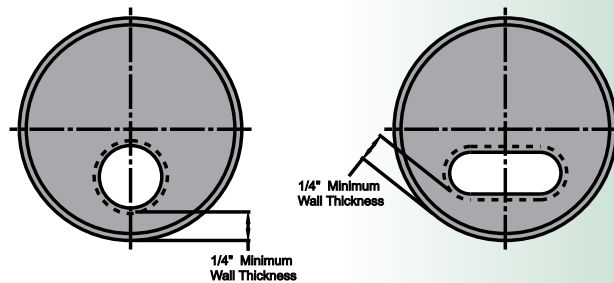
Size	FIGURE NUMBER 55	62
9/32	●	●
5/16	●	●
11/32	●	●
3/8	●	●
13/32	●	●
7/16	●	●
15/32	●	●
1/2	●	●
17/32	●	●
9/16	●	●
19/32	●	●
5/8	●	●
21/32	●	●
11/16	●	●
23/32	●	●
3/4	●	●
25/32	●	●
13/16	●	●
27/32	●	●
7/8	●	●
29/32	●	●
15/16	●	●
31/32	●	●
1	●	●
1-1/32	●	●
1-1/16		●
1-3/32		●
1-1/8		●

STOCK OBLONG OFFSET DIES STYLE 128B

■ Represents stock oblong sizes

Size	FIGURE NUMBER 55	62
13/32 x 25/32	■	■
13/32 x 1-1/32	■	■
15/32 x 25/32	■	■
15/32 x 1-1/32	■	■
17/32 x 1-1/32	■	■
19/32 x 25/32	■	■
19/32 x 1-1/32	■	■
23/32 x 1-1/32	■	■
27/32 x 1-1/32	■	■

The Style 128 Offset dies are manufactured with a minimum wall thickness (slug hole wall to die outside diameter) of 1/4" to ensure the strength of the die. Stock round and oblong Style 128 offset dies are furnished without locators. Locators can be furnished on request.



SAFETY WARNING!!!

Do not use an offset die if you cannot adjust your die holder.

OFFSET DIES-STYLE 128

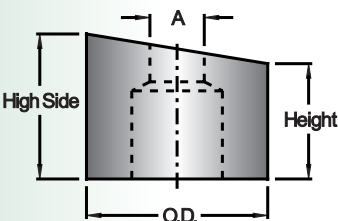
CLEVELAND PUNCH & DIE COMPANY

MADE TO ORDER SIZES CAN BE SHIPPED IN AS LITTLE AS 24 HOURS!

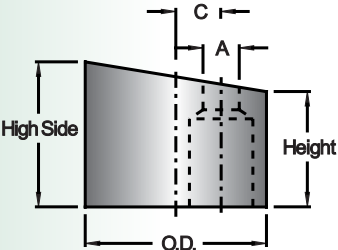
SPECIAL PURPOSE DIES

SPECIAL PURPOSE IRONWORKER DIES are made to order and conform in every respect to the high quality of our standard dies. Style 129 and Style 241 offset dies, are manufactured with a minimum wall thickness (slug hole wall to die outside diameter) of 1/4" to ensure the strength of the die.

Style 127
Plain Bevel
Smooth Top
Concentric



Style 129
Plain Bevel
Smooth Top
Eccentric



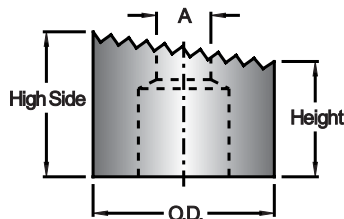
PLAIN BEVEL SMOOTH TOP DIES

are non-marring dies designed especially for use in punching structural shapes such as "I" beams, channels and angle iron. Plain bevel smooth dies are recommended where the material punched is angled or does not have a uniform thickness.

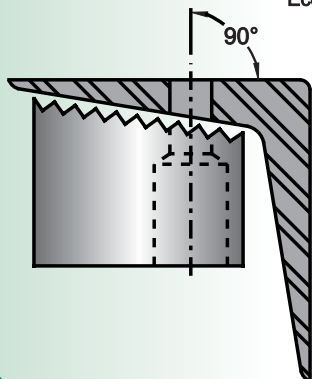
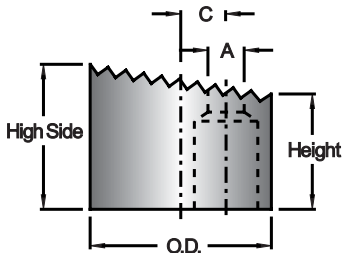
SAWTOOTH TOP DIES

perform the same function as our plain bevel smooth top dies. Sawtooth dies are recommended where there is a tendency for the material to slip during punching. The serrated top surface will grab the material more securely and help hold it in place during the punching operation.

Style 218
Bevel
Serrated
Sawtooth
Concentric

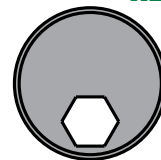


Style 241
Bevel
Serrated
Sawtooth
Eccentric

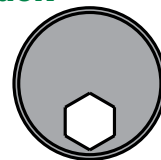


Most large structural shapes have a standard angle. All our bevel dies match this angle to ensure that the hole will be perpendicular to the outside surface.

HEXAGON

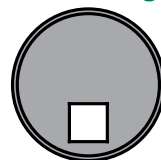


POSITION "A"

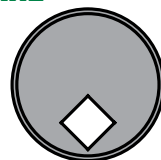


POSITION "B"

SQUARE

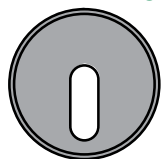


POSITION "A"

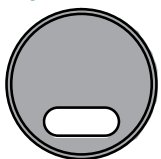


POSITION "B"

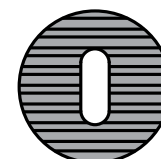
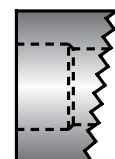
OBLONG



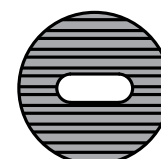
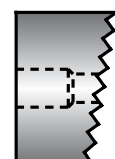
POSITION "A"



POSITION "B"



PARALLEL TO BEVEL



PERPENDICULAR TO BEVEL

SAFETY WARNING!!!

Do not use an offset die if you cannot adjust your die holder.



FOR MORE HOLES PER DOLLAR CALL
1•800•451•4342
 FAX 1•800•451•6877
www.clevelandpunch.com

MADE TO ORDER SIZES CAN BE SHIPPED IN AS LITTLE AS 24 HOURS!

PLEASE NOTE: Standard 28XX punch holders have a 50 ton maximum punching capacity. Heavy duty punches must be used when punching applications exceed 50 tons. 28XX punch attachments are furnished without strippers. Contact CPD's engineering department for heavy duty conversions and custom stripper designs.

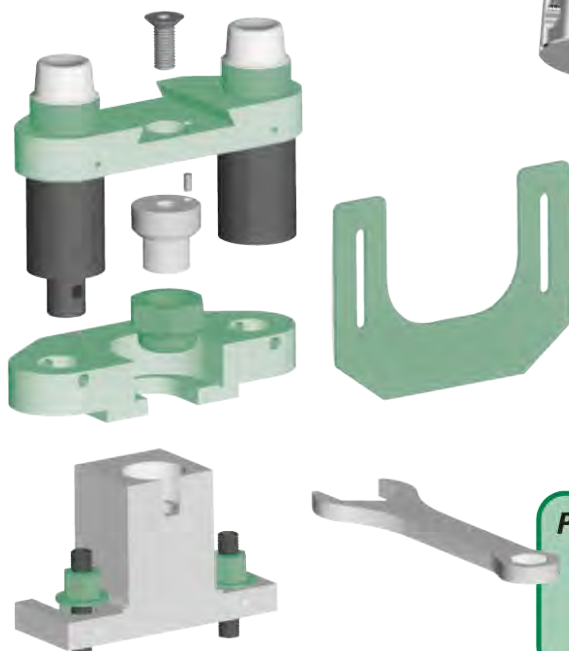
PIRANHA 28XX OVERSIZE ATTACHMENTS

Machine	3-3/4	5-3/4
P-36		
P-50	●	●
P-70	●	●
P-90	●	●
PII-35		
PII-65	●	●
PII-88	●	●
PII-110	●	●
PII-140	●	●
SEPP-35		
SEPP-65	●	●
SEPP-85	●	●
SEPP-120		
SEPP-140	●	●

● Represents stock attachments
 (28XX punch & die holder)

PIRANHA™ P-50 1-1/2"

Oversize Attachment
IN STOCK



PII-65/88 28XX

Punch Holder
IN STOCK



P-50/70/90 28XX

Punch Holder
IN STOCK



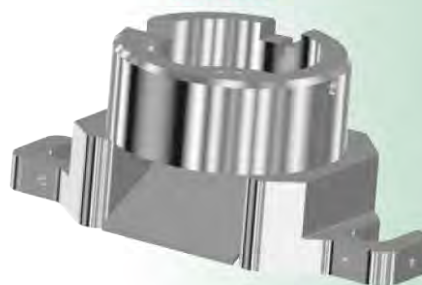
PII-110/140 28XX

Punch Holder
IN STOCK



28XX 3-3/4

Die Holder
IN STOCK



28XX 5-3/4

Die Holder
IN STOCK



**P-50 1-1/2" OVERSIZE ATTACHMENTS ARE IN STOCK
 AND CAN BE SHIPPED THE SAME DAY ORDERED!**

**P-50 1-1/2" OVERSIZE ATTACHMENTS USE
 F-26 PUNCHES AND F-62 DIES.**

PIRANHA™ OVERSIZE ATTACHMENTS.

CLEVELAND PUNCH & DIE COMPANY

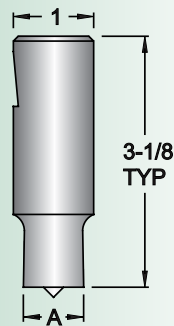
Dimensions & Specifications

These pages illustrate our 28XX round and shaped punches and dies for Piranha™ Ironworkers oversize punching attachments. Refer to our Cross Reference Catalog for the proper tooling to fit your machine.

STOCK PUNCHES & DIES ARE SHIPPED THE SAME DAY ORDERED!

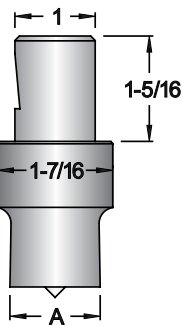
MADE TO ORDER SIZES CAN BE SHIPPED IN AS LITTLE AS 24 HOURS!

F-2800
IN STOCK



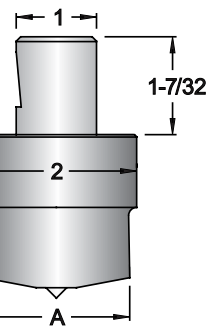
Sizes .062 to 1.000

F-2801
IN STOCK



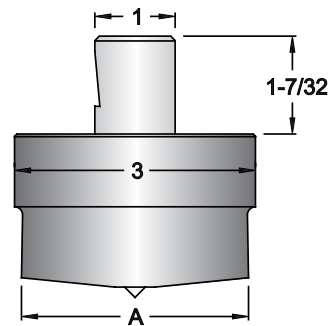
Sizes 1.001 to 1.437

F-2802
IN STOCK



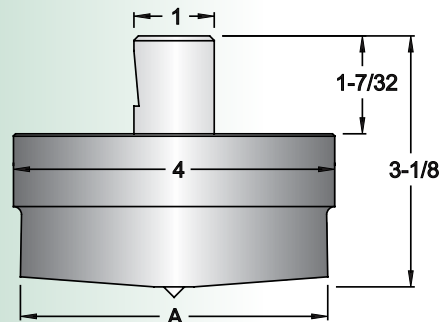
Sizes 1.438 to 2.000

F-2803
IN STOCK



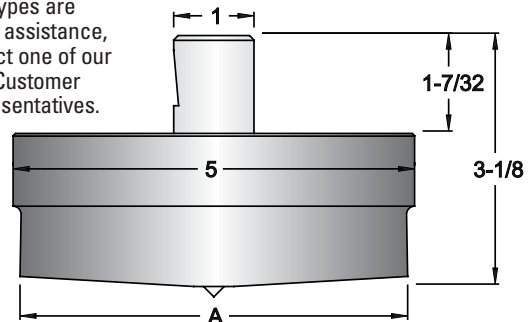
Sizes 2.001 to 3.000

F-2804
IN STOCK



Sizes 3.001 to 4.000

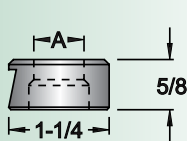
F-2805
IN STOCK



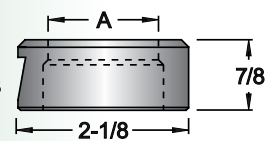
Sizes 4.001 to 5.000

All punches, tip (point) sizes greater than 1-7/16" are provided with a house top shear and center point. Other shear types are available. For assistance, please contact one of our Green Team Customer Service representatives.

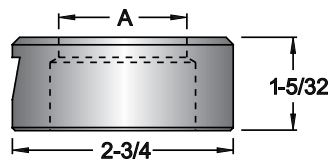
F-2810
IN STOCK



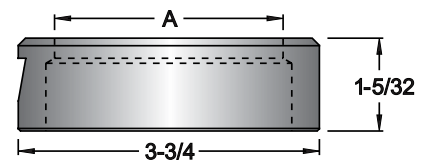
F-2811
IN STOCK



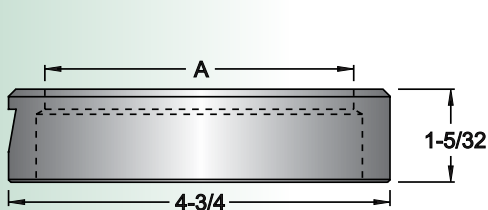
F-2812
IN STOCK



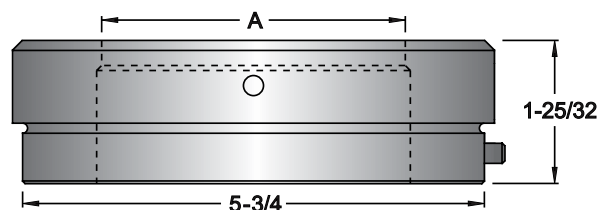
F-2813
IN STOCK



F-2814
IN STOCK



F-2815
IN STOCK



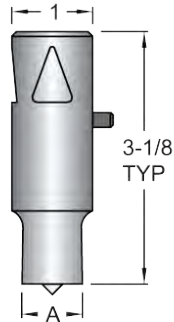
28XX ROUND TOOLING



FOR MORE HOLES PER DOLLAR CALL
1•800•451•4342
 FAX 1•800•451•6877
www.clevelandpunch.com

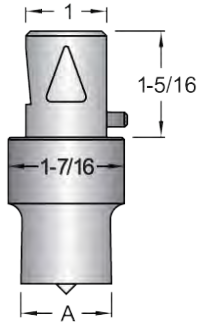
*MADE TO ORDER SIZES CAN BE SHIPPED IN AS LITTLE AS 24 HOURS!

F-2820*



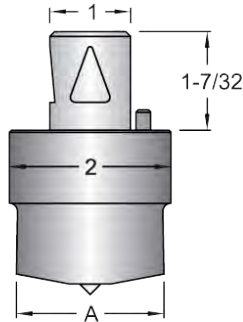
Sizes .062 to 1.000

F-2821*



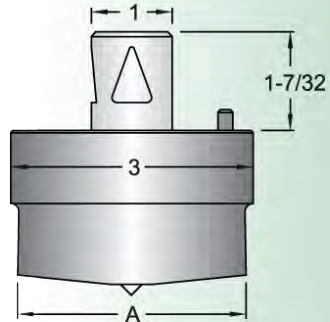
Sizes 1.001 to 1.437

F-2822*



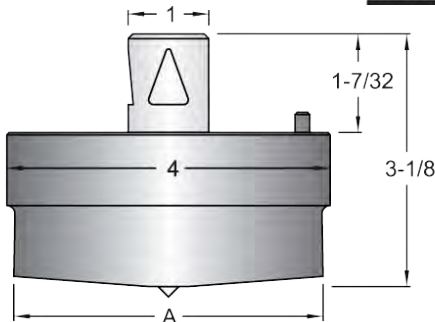
Sizes 1.438 to 2.000

F-2823*



Sizes 2.001 to 3.000

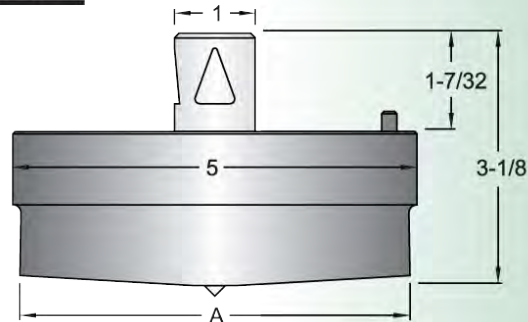
F-2824*



Sizes 3.001 to 4.000

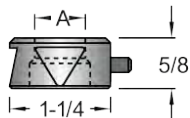
28XX tooling is rated at a maximum of 50 tons.

F-2825*

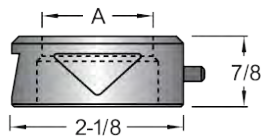


Sizes 4.001 to 5.000

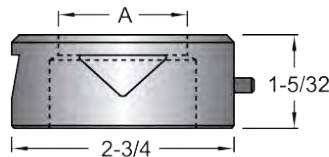
F-2830*



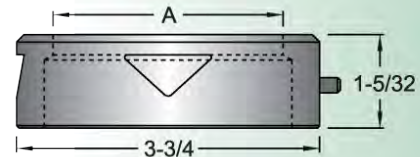
F-2831*



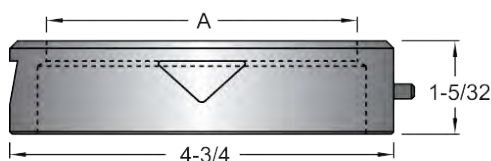
F-2832*



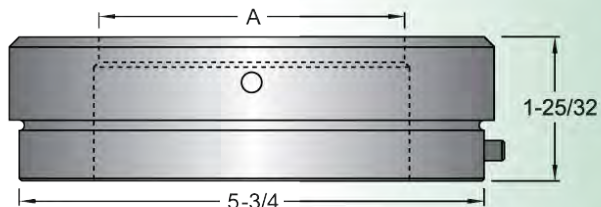
F-2833*



F-2834*



F-2835*



28XX SHAPED TOOLING

CLEVELAND PUNCH & DIE COMPANY

The following table lists our stock round 28XX punches and dies for Piranha™ Ironworkers oversize hole punching attachments. Refer to our Cross Reference Catalog for the proper tooling to fit your machine.

STOCK PUNCHES & DIES ARE SHIPPED THE SAME DAY ORDERED!
MADE TO ORDER SIZES CAN BE SHIPPED IN AS LITTLE AS 24 HOURS!

28XX ROUND TOOLING

STOCK ROUND 28XX PUNCHES

● Represents stock round sizes

FIGURE NUMBER

Size	F-2800	F-2801	F-2802	F-2803	F-2804	F-2805
1/4	●					
5/16	●					
3/8	●					
7/16	●					
1/2	●					
9/16	●					
5/8	●					
11/16	●					
3/4	●					
13/16	●					
7/8	●					
1	●					
1-1/16		●				
1-1/8		●				
1-3/16		●				
1-1/4		●				
1-5/16		●				
1-3/8		●				
1-7/16		●				
1-1/2			●			
1-9/16			●			
1-5/8			●			
1-11/16			●			
1-3/4			●			
1-13/16			●			
1-7/8			●			
1-15/16			●			
2			●			
2-1/8				●		
2-1/4				●		
2-3/8				●		
2-1/2				●		
2-5/8				●		
2-3/4				●		
2-7/8				●		
3				●		
3-1/4					●	
3-1/2					●	
3-3/4					●	
4					●	
4-1/2						●

STOCK ROUND 28XX DIES

● Represents stock round sizes

FIGURE NUMBER

Size	F-2810	F-2811	F-2812	F-2813	F-2814	F-2815
9/32	●					
11/32	●					
13/32	●					
15/32	●					
17/32	●					
19/32	●					
21/32	●					
23/32	●					
25/32		●				
27/32		●				
29/32		●				
1-1/32		●				
1-3/32		●				
1-5/32		●				
1-7/32		●				
1-9/32		●				
1-11/32		●				
1-13/32		●				
1-15/32		●				
1-17/32			●			
1-19/32			●			
1-21/32			●	●		
1-23/32			●	●		
1-25/32			●	●		
1-27/32			●	●		
1-29/32			●	●		
1-31/32			●	●		
2-1/32			●	●		
2-5/32			●	●		
2-9/32				●		
2-13/32				●		
2-17/32				●		
2-21/32				●		
2-25/32				●		
2-29/32				●		
3-1/32				●		
3-9/32					●	●
3-17/32					●	●
3-25/32					●	●
4-1/32					●	●
4-17/32						●



FOR MORE HOLES PER DOLLAR CALL
1•800•451•4342
 FAX 1•800•451•6877
www.clevelandpunch.com

MADE TO ORDER SIZES CAN BE SHIPPED IN AS LITTLE AS 24 HOURS!

Piranha™ Punch Stems, Coupling Nuts and Miscellaneous Parts

The following table lists our stock Piranha™ punch stems, coupling nuts, die holders, urethane strippers and filter elements. Please provide the model and serial number when ordering replacement parts. If the part required is not listed, kindly furnish a part number, sketch or drawing.

URETHANE STRIPPERS



DIE HOLDER



PUNCH STEMS



PIRANHA™
 CN-56 Coupling Nut
IN STOCK



PIRANHA™
 CN-26A Coupling Nut
IN STOCK



PIRANHA™
 CN-26P Coupling Nut
IN STOCK



FILTER ELEMENT



● Represents stock parts

Model No.	P-36	P-50 (P-3)	RP-50	P-70	P-90	P-120	PII-35	PII-65	PII-88	PII-110	PII-140	SEPP-35	SEPP-65	SEPP-88	SEPP-120	SEPP-140
Urethane Stripper	●	●	●	●	●	●	N/A	N/A	N/A	N/A	N/A	N/A	N/A	N/A	N/A	N/A
Punch Stem	●	●	●	●	●	●	●	●	●	●	●	●	●	●	●	●
Die Holder	●	●	●	●	●	●	●	●	●	●	●	●	●	●	●	●
Coupling Nut	●	●	●	●	●	●	●	●	●	●	●	●	●	●	●	●
Filter Element	●	●	●	●	●	●	●	●	●	●	●	●	●	●	●	●

PIRANHA™ PARTS

CLEVELAND PUNCH & DIE COMPANY

Piranha™ Shear/Angle Blades & Copers

The following table lists our stock Piranha™ shear blades, angle blades and copers. Please provide the model and serial number when ordering replacement blades. If the blade required is not listed, kindly furnish a part number, sketch or drawing.

STOCK PUNCHES & DIES ARE SHIPPED THE SAME DAY ORDERED!

MADE TO ORDER SIZES CAN BE SHIPPED IN AS LITTLE AS 24 HOURS!

LONG SHEAR BLADE
2 Required

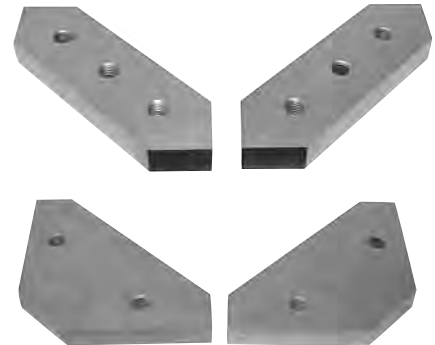


SHORT SHEAR BLADE
2 Required

UPPER ANGLE BLADE



LOWER ANGLE BLADE
2 Required



● Represents stock parts

Model No.	P-36	P-50 (P-3)	RP-50	P-70	P-90	P-120	PII-35	PII-65	PII-88	PII-110	PII-140
Short Shear Blade 2 Required	●	●	●	●	●	●	●	●	●	●	●
Long Shear Blade 2 Required	●	●	N/A	N/A	●	●	●	●	●	N/A	●
Upper Angle	●	●	●	●	●	●	●	●	●	●	●
Lower Angle 2 Required	●	●	●	●	●	●	●	●	●	●	●

UPPER COPER



LOWER COPER-SIDE
2 Required

LOWER COPER-FRONT

● Represents stock parts

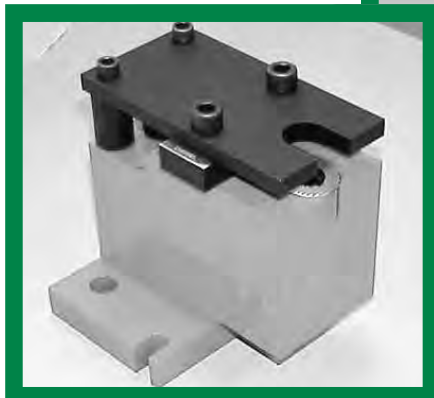
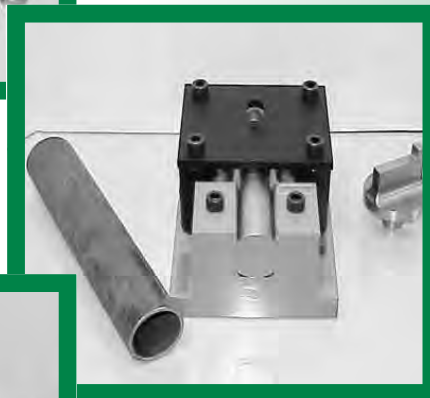
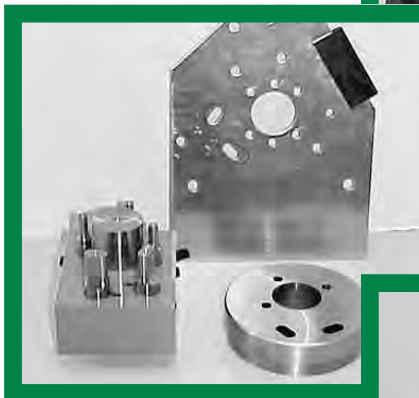
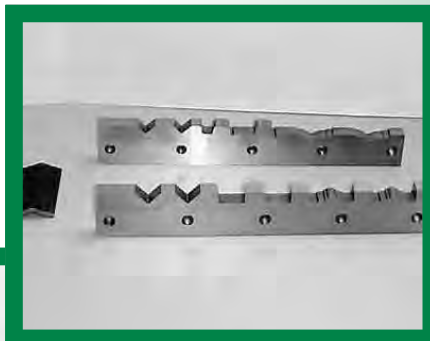
Model No.	P-36	P-50 (P-3)	RP-50	P-70	P-90	P-120	PII-35	PII-65	PII-88	PII-110	PII-140
Upper Coper	●	●	●	●	●	●	●	●	●	●	●
Lower Coper Front	●	●	●	●	●	●	●	●	●	●	●
Lower Coper Side 2 Required	●	●	●	●	●	●	●	●	●	●	●

PIRANHA™ BLADES

When unique products call for specialized punches or multiple-punch operations, you can rely on us for the right tools. With your specifications and criteria on hand, our staff engineers can apply the unique experience and skills required to meet these non-standard requests. Nationally, customers turn to us at the very onset of product development to gain important insight that may help eliminate problems in production. Here, state-of-the-art technology guides computer-aided processes to build highly accurate tools plus ensure the rapid turnaround you require.

FOR MORE HOLES PER DOLLAR CALL
1-800-451-4342
FAX 1-800-451-6877
www.clevelandpunch.com

MADE TO ORDER SIZES CAN BE SHIPPED IN AS LITTLE AS 24 HOURS!



This catalog is the property of The Cleveland Punch & Die Company. All rights reserved. Reproduction of any part of this catalog without the expressed written consent of The Cleveland Punch & Die Company is strictly prohibited.
COPYRIGHT©2005
Cleveland Punch & Die Co.
666 Pratt Street, Box 769
Ravenna, Ohio 44266
1-800-451-4342
Fax 1-800-451-6877
All Rights Reserved.



PIRANHA™ SPECIAL TOOLING



Punch-Easy®

**Patented
Punch and Die Lubricant**

Punch-Easy® is a non-pigmented honey colored heavy duty odorless punching and shearing oil for thick materials. It is used on ferrous or non ferrous steels where scoring, galling and friction is a problem. It is a particularly good punch and shear oil for thick high carbon steel, armor plate, grader blade, farm implement tools and stainless steels. Punch-Easy® is unparalleled for high production and multiple stage punching or stamping operations. Actual pyrometer readings indicate an operating heat reduction in drawn parts, punches and dies of 40%. It is to be used for cold application and not made for hot application. Punch-easy® may be used as received or diluted with light mineral oil for less severe jobs. **Punch-Easy® is now available in quarts, gallons, 5-gallon reusable pails, case lots and 55-gallon drums. Use Punch-Easy today!**



"Punch Easy" doubles my tooling life
when punching thicker material.

-T.V.
Pennsylvania

Punches, dies, shears receive less scoring and galling.

Utilize more press time by decreased tool changes.

New tool life making better holes for a longer time.

Cleans easy with any standard cleaner if required.

Holds lubrication to tools for rust prevention when not in use.

Ease of application with brush or swab.

Approved and tested for the toughest punching and shear jobs.

Smooth increased production with more parts per tool.

Your best bet is to use **Punch-Easy**.

"Punch Easy" eliminated
my customer's galling
problem immediately.

-M.M.
Dealer, New York

"Punch Easy" solved
the problem of the
end of our punches
pulling off.

-R.W.
Dealer, Oklahoma

1-800-451-4342 phone
1-800-451-6877 fax

666 Pratt St. • Box 769 • Ravenna, Ohio 44266

www.clevelandpunch.com • E-mail: sales@clevelandpunch.com

MORE HOLES PER DOLLAR



Punches, Dies, & Shear Blades

FOR SCOTCHMAN™ IRONWORKERS

☎ **USA:** 800-451-4342

☎ **International:** 330-296-4342

☎ **Fax:** 800-451-6877

💻 **Visit:** www.clevelandpunch.com

✉ **Email:** sales@clevelandpunch.com

📍 **Address:** 666 Pratt Street, Ravenna, OH 44266

CLEVELAND

PUNCH & DIE COMPANY

ESTABLISHED 1880

THE CLEVELAND ADVANTAGES

Going the Extra Mile and Delivering on Our Promises For Over 140 Years

THE WORLD LEADER IN THE TOOLING INDUSTRY

With over 140 years of experience in the industry, our team at Cleveland Punch & Die is dedicated to support our customer's needs. We have the industry's largest stocking inventory and are the OEM recommended supplier for machines across the industry. As the world-class leader in tooling and related components, you can be assured of our commitment to excellence.

THE GREEN TEAM

Our customer service team is here to provide the knowledge and service you deserve and strives to develop long lasting partnerships. We are available by phone, email or online chat 7am - 6pm EST.

WORLD CLASS ENGINEERING

Our Engineering team works hard to design the highest quality punches, dies, shear blades, and custom tooling on the market. Our high quality and innovative tools keep your shop on the leading edge of technology.

CONSISTENT QUALITY

We provide our customers with tooling manufactured from our own proprietary tool steel. By utilizing a consistent raw material and the latest metallurgical heat-treating technology, the tooling you receive from Cleveland Punch & Die is the industry's highest and most consistent quality.

DEPENDABLE DELIVERY

Our commitment to manufacturing innovation enables Cleveland Punch & Die to provide you with prompt shipment on the highest quality tools you need. Fast delivery means increased productivity for your operation.

MODEL		A.P.	VOLT	
SERIAL		AC	P.A.	
SCOTCHMAN INDUSTRIES, INC.		PH	PH	
PHILIP, SOUTH DAKOTA, U.S.A.		BLADE LENGTH		
PH. 605-389-2542				

TABLE OF CONTENTS

Punches, Dies, & Shear Blades For Scotchman™ Ironworkers

1 PUNCHES & DIES

Punches, Dies, Shape Options, & Punch-Easy®

2 OVERSIZE TOOLING

Oversize Punches & Dies

3 ACCESSORIES

Headed & Snap Ring Style Accessories

4 SHEAR BLADES

Flat Bars, Notchers, & Angles

5 CUSTOM APPLICATIONS

Corner Radius, Picket, Offset, Bevel, & Bevel Serrated Dies, Pipe Notcher, & More

7 STOCK PUNCH CHARTS

Stock Round, Square, Hexagon, & Oblong Punch Charts

8 STOCK DIE CHARTS

Stock Round, Square, Hexagon, & Oblong Die Charts

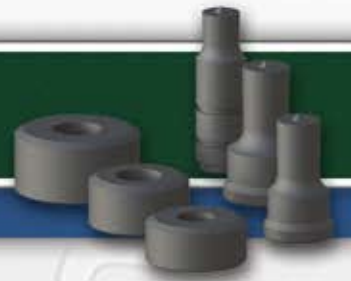
CLEVELAND

PUNCH & DIE COMPANY

ESTABLISHED 1880

PUNCHES & DIES

Punches, Dies, Shape Options, & Punch-Easy®

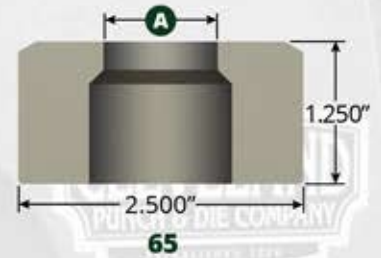
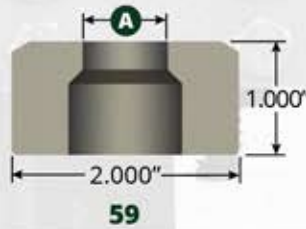
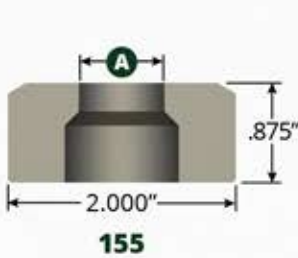


PUNCHES



See stock punch sizes on page 7.

DIES



See stock die sizes on page 8.

SHAPE OPTIONS

Shaped tooling is available upon request. When ordering, please provide size and desired shape. Punches and dies can be keyed and notched to index shape at desired orientation.



SQUARE



RECTANGLE



OBLONG



HEXAGON

PUNCH-EASY®

Our patented lubricant, Punch-Easy®, is formulated to increase tool life during punching and shearing applications.



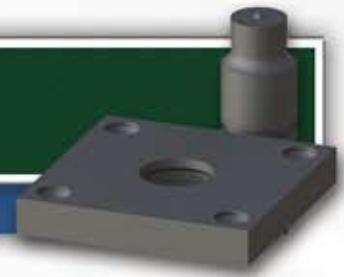
PART #	DESCRIPTION
PEHP	HALF PINT
PEQTL	QUART
PEGLL	GALLON
PE5GL	5 GALLON PAIL
PE5SL	55 GALLON DRUM



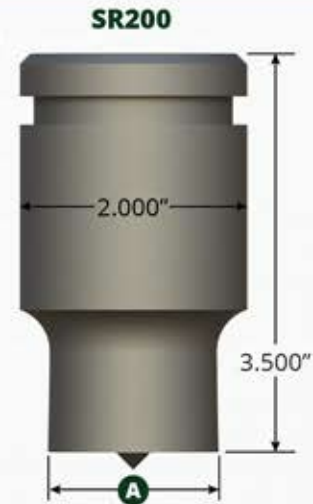
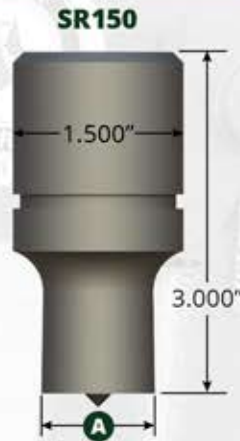
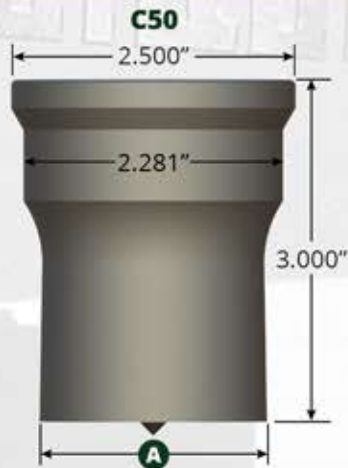
OSHA SAFETY WARNING: It is the users responsibility that the machine and tooling be setup and used in accordance with local and national OSHA laws and ANSI B11.5 standards for safety. Do not permit unqualified personnel to setup or operate the machine. Extreme care should be used at all times.

OVERSIZE TOOLING

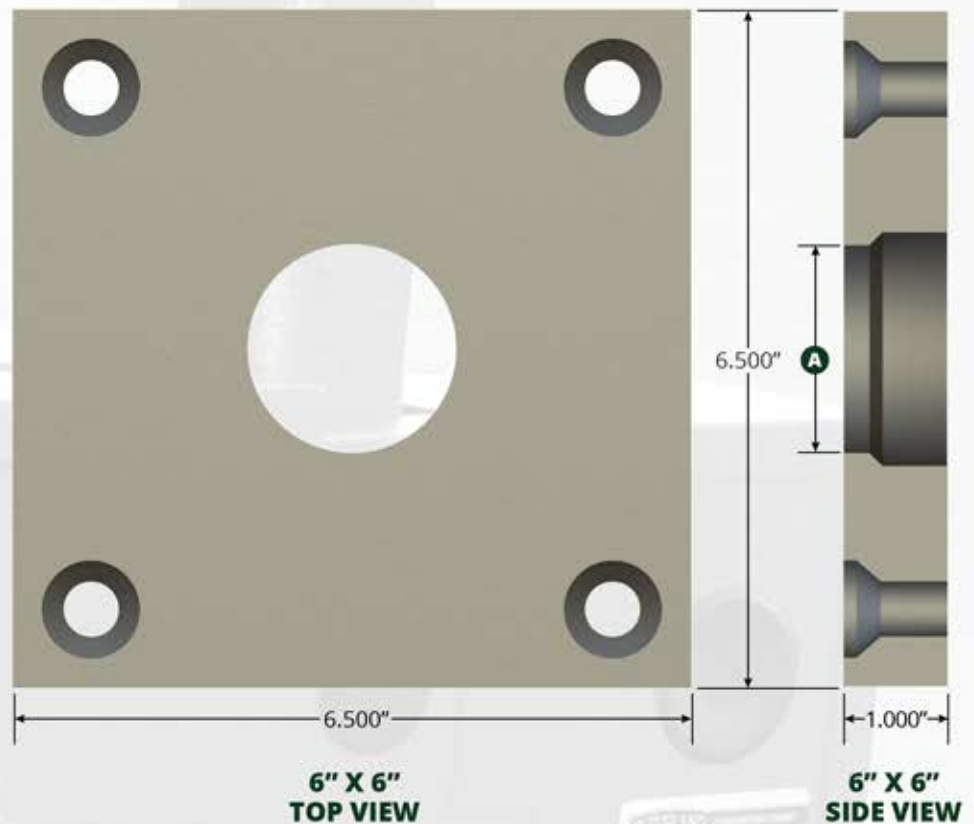
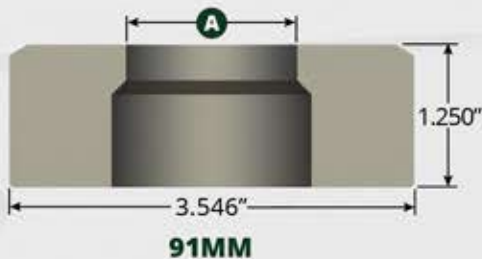
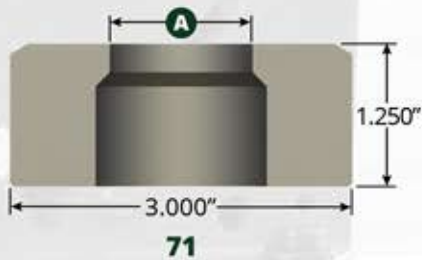
Oversize Punches & Dies



PUNCHES

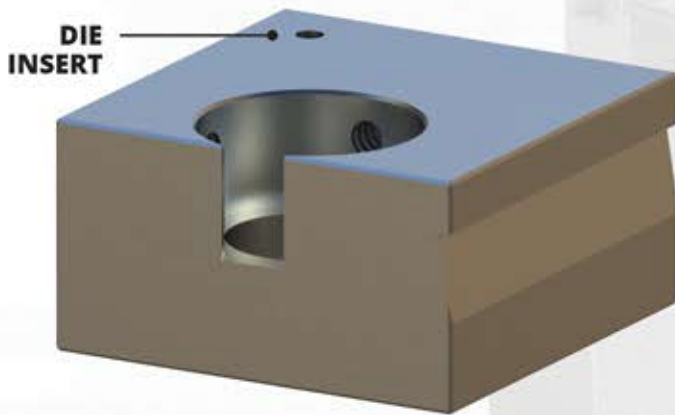
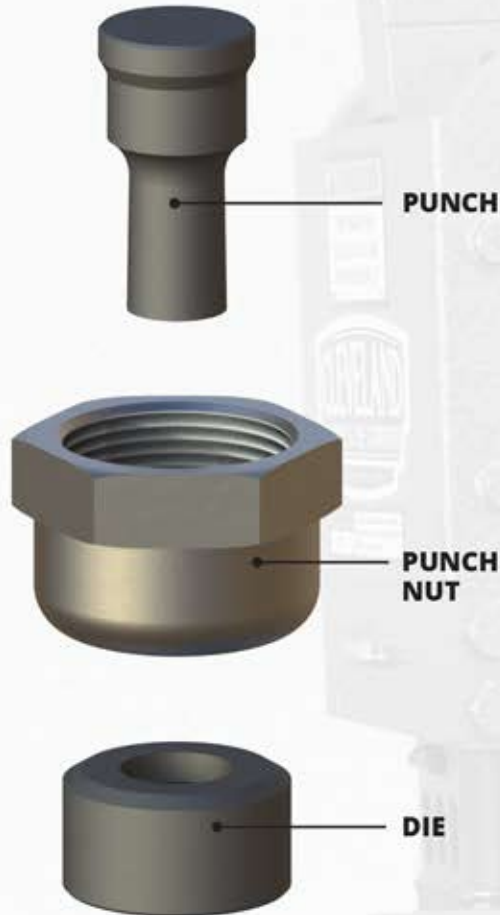


DIES

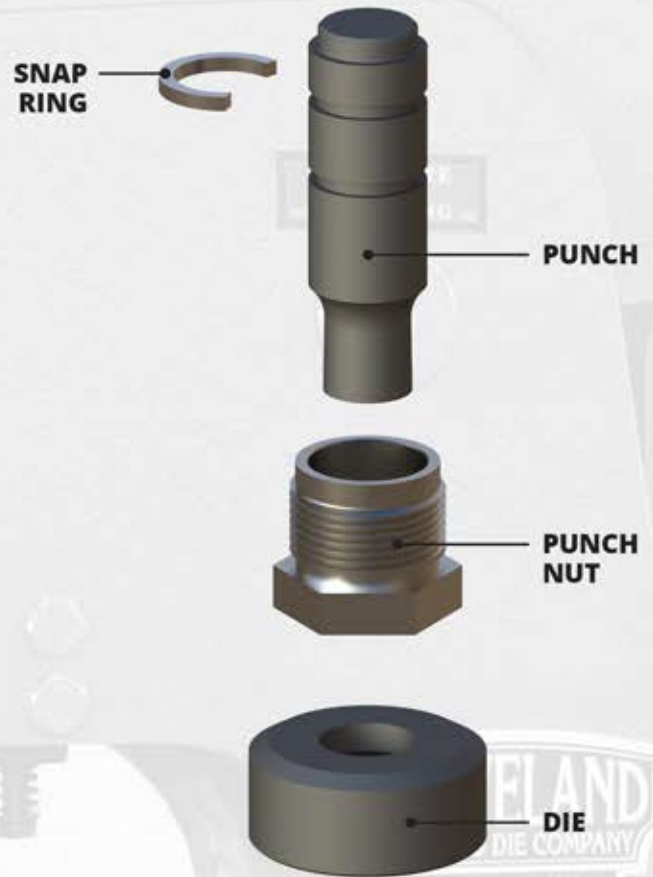




HEADED STYLE ACCESSORIES



SNAP RING STYLE ACCESSORIES



SNAP RING STYLE ACCESSORIES

PART #	DESCRIPTION
CPDK0006	SNAP RING
CNSR20	SR20K PUNCH NUT

HEADED STYLE ACCESSORIES

PART #	DESCRIPTION
CN20D	20 PUNCH NUT
S10R0001	59 DIE INSERT
S10R0002	65 DIE INSERT
S10R0003	71 DIE INSERT

Ask About Hardware For Your Scotchman™ Ironworker.

SHEAR BLADES

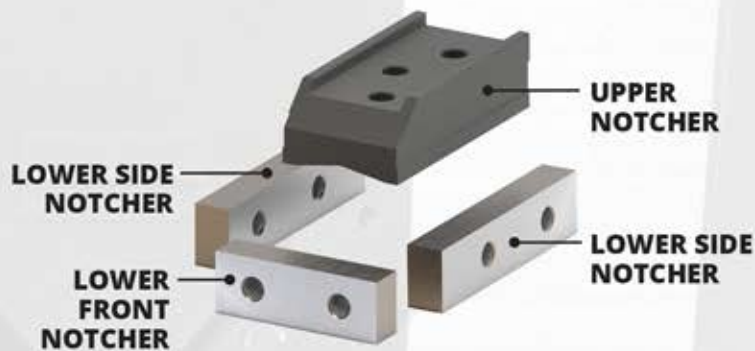
Flat Bars, Notchers, & Angles



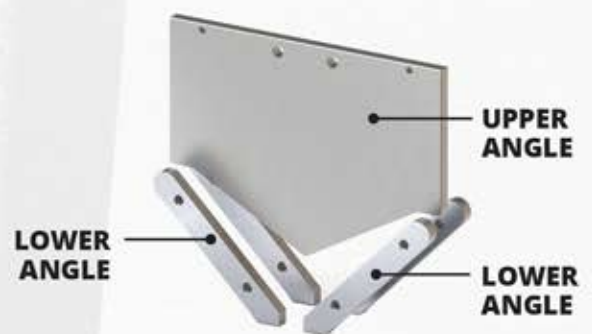
FLAT BAR



NOTCHER



ANGLE



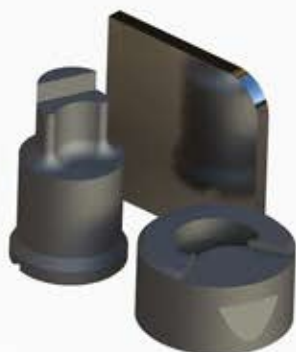
SCOTCHMAN™ IRONWORKERS

BLADES	5014-ET	50514-EC	6509-24M	9012-24M	12012-24M	DO 70/ 110-24M	DO 8514-20M	DO 95/ 140-24M	DO 120/ 200-24M	DO 135/ 220-24M	DO 150/ 240-24M	FI 8510-20M
FLAT BAR												
UPPER FLAT BAR	S10B0004	S10B0004	S10B0002	S10B0002	S10B0002	S10B0002	S10B0013	S10B0002	S10B0002	S10B0002	S10B0002	S10B0013
UPPER FLAT BAR (NON-DEFORMING)	S10B0026	S10B0026	-	-	-	-	-	-	-	-	-	-
LOWER FLAT BAR	S10B0004	S10B0004	S10B0002	S10B0002	S10B0002	S10B0002	S10B0014	S10B0002	S10B0002	S10B0002	S10B0002	S10B0014
NOTCHER												
UPPER NOTCHER	S10B0031	S10B0031	S10B0044	S10B0044	S10B0044	S10B0012	S10B0046	S10B0012	S10B0008	S10B0008	S10B0008	S10B0012
LOWER SIDE NOTCHER (2)	S10B0032	S10B0032	S10B0045	S10B0045	S10B0045	S10B0015	S10B0048	S10B0015	S10B0009	S10B0009	S10B0009	S10B0015
LOWER FRONT NOTCHER	S10B0032	S10B0032	S10B0045	S10B0045	S10B0045	S10B0010	S10B0047	S10B0010	S10B0010	S10B0010	S10B0010	S10B0010
ANGLE												
UPPER ANGLE	S10B0038	S10B0038	S10B0006	S10B0006	S10B0006	S10B0006	S10B0043	S10B0006	S10B0006	S10B0006	S10B0006	S10B0040
LOWER ANGLE (4)	S10B0039	S10B0039	S10B0007	S10B0007	S10B0007	S10B0007	-	S10B0007	S10B0007	S10B0007	S10B0007	-
LOWER ANGLE (2)	-	-	-	-	-	-	S10B0042	-	-	-	-	-
LOWER ANGLE	-	-	-	-	-	-	-	-	-	-	-	S10B0041
LOWER SHORT ANGLE	-	-	-	-	-	-	-	-	-	-	-	S10B0042



CORNER RADIUS

- Generate a specified radius on the corner of material.



STOCK CORNER RADIUS PUNCHES

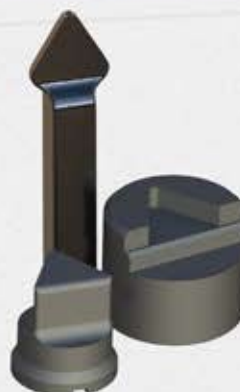
A	20
3/8"	•
7/16"	•
1/2"	•

STOCK CORNER RADIUS DIES

A	59
3/8"	•
7/16"	•
1/2"	•

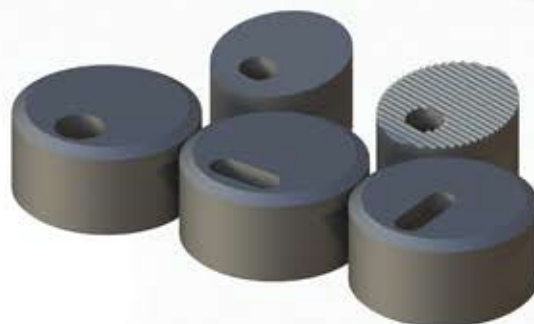
PICKET

- Generate a spear point on square tubing for fence and ornamental iron.
- Flattens and cuts in one operation.



OFFSET, BEVEL, & BEVEL SERRATED DIES

- Offset dies are used to generate holes close to the inside leg of angle iron, I-beam, and channel.
- Plain bevel dies are recommended when punching material that does not have a uniform thickness.



STOCK OFFSET ROUND DIES A-180°

A	59	A	59
9/32"	•	21/32"	•
11/32"	•	11/16"	•
13/32"	•	23/32"	•
7/16"	•	3/4"	•
15/32"	•	25/32"	•
1/2"	•	13/16"	•
17/32"	•	27/32"	•
9/16"	•	7/8"	•
19/32"	•	29/32"	•
5/8"	•		

STOCK OFFSET OBLONG DIES B-180°

A	59
13/32" x 25/32"	•
13/32" x 1-1/32"	•
15/32" x 25/32"	•
15/32" x 1-1/32"	•
17/32" x 1-1/32"	•
19/32" x 25/32"	•
19/32" x 1-1/32"	•
23/32" x 1-1/32"	•
27/32" x 1-1/32"	•



RD. A-180°
STOCK



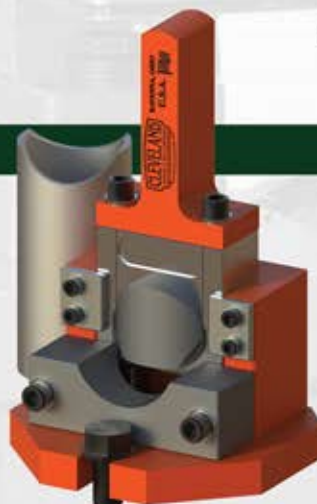
OB. A-180°



OB. B-180°
STOCK

PIPE/TUBE NOTCHER

- Used to notch the end of the pipe or tubing in preparation for fitting and welding.



STOCK PIPE NOTCH TOOLING

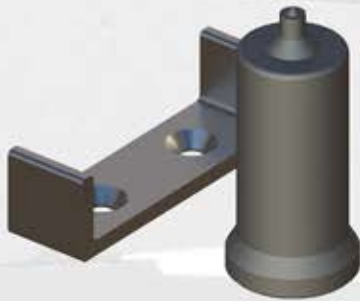
PART #	DESCRIPTION
S10A0068	STRIKER
CPDA0026	HOUSING
CPDA0111	1" SCHEDULE 40 TOOLING
CPDA0112	1-1/4" SCHEDULE 40 TOOLING
CPDA0020	1-1/2" SCHEDULE 40 TOOLING
CPDA0113	2" SCHEDULE 40 TOOLING
CPDA0030	1/2" x 3" DIE SPRINGS

CUSTOM APPLICATIONS

Countersink, Double Step, Keyhole, Lattice Bar, Louver, & Ripping Punch



COUNTERSINK



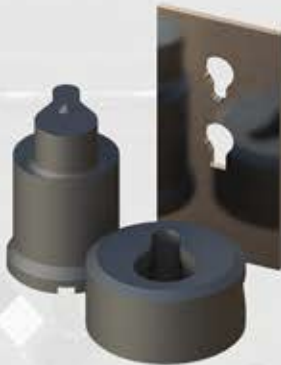
- Punch and form a countersink hole to allow flathead bolts or screws to sit flush with material surface.
- Please provide bolt/screw size and material thickness when ordering.

DOUBLE STEP



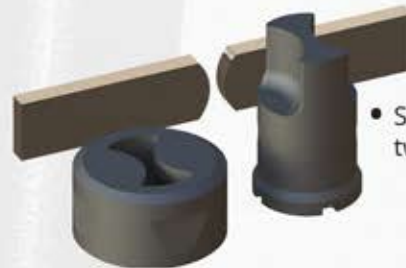
- Punch holes close to the inside leg of angle iron or channel.
- Please provide angle, channel, or I-beam specifications along with hole location when ordering.

KEYHOLE



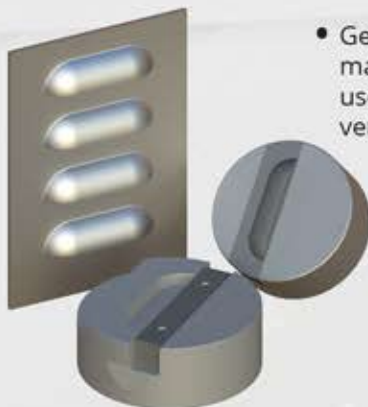
- Used in removable applications where a bolt, chain, or anchor needs to lock in place.
- Common uses include pallet racks, shelving, dump truck bodies, and tow trucks.

LATTICE BAR



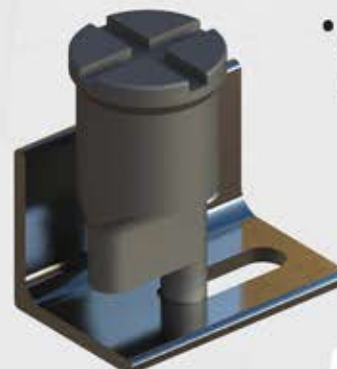
- Shear and generate one or two radii on flat bar material.

LOUVER



- Generate an angled slat in material. Most commonly used to allow for air ventilation.

RIPPING PUNCH



- Produce an elongated hole where the desired length exceeds the machine capacity.

CLEVELAND

PUNCH & DIE COMPANY

ESTABLISHED 1880

STOCK PUNCH CHARTS

Stock Round, Square, Hexagon, & Oblong Punch Charts



STOCK ROUND PUNCHES

A	SR20K	20	26	C50
1/8"	•	•	•	
5/32"	•	•	•	
3/16"	•	•	•	
7/32"	•	•	•	
1/4"	•	•	•	
9/32"	•	•	•	
5/16"	•	•	•	
11/32"	•	•	•	
3/8"	•	•	•	
13/32"	•	•	•	
7/16"	•	•	•	
15/32"	•	•	•	
1/2"	•	•	•	
17/32"	•	•	•	
9/16"	•	•	•	
19/32"	•	•	•	
5/8"	•	•	•	
21/32"	•	•	•	
11/16"	•	•	•	
23/32"	•	•	•	
3/4"	•	•	•	
25/32"	•	•	•	
13/16"	•	•	•	
27/32"	•	•	•	
7/8"	•	•	•	
29/32"	•	•	•	
15/16"	•	•	•	
31/32"	•	•	•	
1"	•	•	•	
1-1/32"	•	•	•	
1-1/16"	•	•	•	•
1-3/32"	•	•	•	
1-1/8"	•	•	•	•
1-5/32"	•	•	•	
1-3/16"	•	•	•	•
1-7/32"	•	•	•	
1-1/4"	•	•	•	•
1-9/32"	•	•	•	
1-5/16"	•	•	•	•
1-11/32"	•	•	•	
1-3/8"	•	•	•	•
1-13/32"	•	•	•	
1-7/16"	•	•	•	•
1-15/32"	•	•	•	
1-1/2"	•	•	•	•
1-17/32"	•	•	•	
1-9/16"	•	•	•	•
1-5/8"	•	•	•	
1-11/16"	•	•	•	•
1-3/4"	•	•	•	
1-13/16"	•	•	•	•
1-7/8"	•	•	•	
1-15/16"	•	•	•	•
2"	•	•	•	
2-1/16"	•	•	•	•
2-1/8"	•	•	•	
2-3/16"	•	•	•	•
2-1/4"	•	•	•	

STOCK SQUARE PUNCHES

A	20	26
7/32"	•	
1/4"	•	
9/32"	•	
5/16"	•	•
11/32"	•	•
3/8"	•	•
13/32"	•	•
7/16"	•	•
15/32"	•	•
1/2"	•	•
17/32"	•	•
9/16"	•	•
19/32"	•	•
5/8"	•	•
21/32"	•	•
11/16"	•	•
23/32"	•	•
3/4"	•	•
25/32"	•	•
13/16"	•	•
7/8"	•	•
15/16"	•	•
1"	•	•
1-1/16"	•	•

STOCK HEX PUNCHES

A	20	26
11/32"	•	•
3/8"	•	•
13/32"	•	•
7/16"	•	•
15/32"	•	•
1/2"	•	•
17/32"	•	•
9/16"	•	•
19/32"	•	•
5/8"	•	•
21/32"	•	•
11/16"	•	•
23/32"	•	•
3/4"	•	•
25/32"	•	•
13/16"	•	•
27/32"	•	•
7/8"	•	•
29/32"	•	•
15/16"	•	•
31/32"	•	•
1"	•	•
1-1/32"	•	•
1-1/16"	•	•
1-3/32"	•	•
1-1/8"	•	•
1-5/32"	•	•
1-3/16"	•	•
1-7/32"	•	•
1-1/4"	•	•

STOCK OBLONG PUNCHES

A	SR20K	20	26	A	SR20K	20	26
3/16" x 1"		•	•	17/32" x 1-1/4"		•	•
7/32" x 7/16"		•		17/32" x 1-1/2"			•
7/32" x 1"		•	•	9/16" x 3/4"		•	•
1/4" x 1/2"		•	•	9/16" x 1"	•	•	•
1/4" x 3/4"		•	•	9/16" x 1-1/16"		•	•
1/4" x 1"		•	•	9/16" x 1-1/8"		•	•
9/32" x 9/16"		•	•	9/16" x 1-1/4"		•	•
9/32" x 3/4"		•	•	9/16" x 1-1/2"			•
9/32" x 1"		•	•	5/8" x 1"	•	•	•
5/16" x 1/2"		•	•	5/8" x 1-1/4"		•	•
5/16" x 5/8"		•	•	5/8" x 1-1/2"			•
5/16" x 3/4"	•	•	•	11/16" x 1"		•	•
5/16" x 1"	•	•	•	11/16" x 1-1/16"		•	•
5/16" x 1-1/16"		•	•	11/16" x 1-1/8"		•	•
5/16" x 1-1/4"		•	•	11/16" x 1-1/4"		•	•
5/16" x 1-1/2"		•	•	11/16" x 1-1/2"			•
11/32" x 11/16"		•	•	3/4" x 1"		•	•
11/32" x 1"		•	•	3/4" x 1-1/4"		•	•
3/8" x 1/2"		•	•	3/4" x 1-1/2"			•
3/8" x 3/4"	•	•	•	13/16" x 1"		•	•
3/8" x 1"	•	•	•	13/16" x 1-1/16"		•	•
3/8" x 1-1/4"		•	•	13/16" x 1-1/8"		•	•
3/8" x 1-1/2"		•	•	13/16" x 1-1/4"		•	•
13/32" x 13/16"		•	•	13/16" x 1-1/2"			•
13/32" x 1"		•	•	7/8" x 1-1/4"		•	•
13/32" x 1-1/4"		•	•	7/8" x 1-1/2"			•
7/16" x 9/16"		•	•	15/16" x 1-1/16"		•	•
7/16" x 3/4"	•	•	•	15/16" x 1-1/8"		•	•
7/16" x 7/8"		•	•	15/16" x 1-1/4"		•	•
7/16" x 1"	•	•	•	15/16" x 1-1/2"			•
7/16" x 1-1/16"		•	•	15/16" x 1-9/16"			•
7/16" x 1-1/4"		•	•	1" x 1-1/4"		•	•
7/16" x 1-1/2"		•	•	1" x 1-1/2"			•
15/32" x 1"		•	•	1" x 1-9/16"			•
1/2" x 3/4"	•	•	•	1-1/16" x 1-1/4"		•	•
1/2" x 1"	•	•	•	1-1/16" x 1-5/16"			•
1/2" x 1-1/16"		•	•	1-1/16" x 1-1/2"			•
1/2" x 1-1/4"		•	•	1-1/16" x 1-9/16"			•
1/2" x 1-1/2"			•	1-1/8" x 1-1/2"			•
17/32" x 1"		•	•				

A36 MILD STEEL CLEARANCE

MATERIAL THICKNESS	DIE CLEARANCE
1/4" - 15/32"	1/32"
1/2" - 23/32"	1/16"
3/4" - 31/32"	3/32"
1" and over	1/8"

STOCK DIE CHARTS

Stock Round, Square, Hexagon, & Oblong Die Charts



STOCK ROUND DIES			
A	155	59	65
5/32"	•	•	
3/16"	•	•	
7/32"	•	•	•
1/4"	•	•	•
9/32"	•	•	•
5/16"	•	•	•
11/32"	•	•	•
3/8"	•	•	•
13/32"	•	•	•
7/16"	•	•	•
15/32"	•	•	•
1/2"	•	•	•
17/32"	•	•	•
9/16"	•	•	•
19/32"	•	•	•
5/8"	•	•	•
21/32"	•	•	•
11/16"	•	•	•
23/32"	•	•	•
3/4"	•	•	•
25/32"	•	•	•
13/16"	•	•	•
27/32"	•	•	•
7/8"	•	•	•
29/32"	•	•	•
15/16"	•	•	•
31/32"	•	•	•
1"	•	•	•
1-1/32"	•	•	•
1-1/16"	•	•	•
1-3/32"	•	•	•
1-1/8"	•	•	•
1-5/32"	•	•	•
1-3/16"	•	•	•
1-7/32"	•	•	•
1-1/4"	•	•	•
1-9/32"	•	•	•
1-5/16"	•	•	•
1-11/32"	•	•	•
1-3/8"	•	•	•
1-13/32"	•	•	•
1-7/16"	•	•	•
1-15/32"	•	•	•
1-1/2"	•	•	•
1-17/32"	•	•	•
1-9/16"	•	•	•
1-19/32"	•	•	•
1-5/8"	•	•	•

STOCK SQUARE DIES		
A	59	65
1/4"	•	
9/32"	•	
5/16"	•	
11/32"	•	
3/8"	•	
13/32"	•	
7/16"	•	
15/32"	•	•
1/2"	•	•
17/32"	•	
9/16"	•	•
19/32"	•	
5/8"	•	•
21/32"	•	
11/16"	•	•
23/32"	•	
3/4"	•	•
25/32"	•	
13/16"	•	•
27/32"	•	
7/8"	•	•
29/32"	•	
15/16"	•	•
1"	•	•
1-1/16"	•	•
1-3/32"	•	•
1-1/8"	•	•

STOCK HEX DIES	
A	59
3/8"	•
13/32"	•
7/16"	•
15/32"	•
1/2"	•
17/32"	•
9/16"	•
19/32"	•
5/8"	•
21/32"	•
11/16"	•
23/32"	•
3/4"	•
25/32"	•
13/16"	•
27/32"	•
7/8"	•
29/32"	•
15/16"	•

STOCK OBLONG DIES					
A	155	59	A	155	59
7/32" x 1-1/32"		•	19/32" x 1-1/32"		•
1/4" x 15/32"		•	19/32" x 1-3/32"		•
1/4" x 1-1/32"			19/32" x 1-5/32"		•
9/32" x 17/32"		•	19/32" x 1-9/32"		•
9/32" x 25/32"		•	5/8" x 13/16"		•
9/32" x 1-1/32"		•	5/8" x 1-1/16"		•
5/16" x 19/32"		•	5/8" x 1-1/8"		•
5/16" x 25/32"		•	5/8" x 1-3/16"		•
5/16" x 1-1/32"		•	5/8" x 1-5/16"		•
11/32" x 17/32"		•	21/32" x 1-1/32"	•	•
11/32" x 21/32"		•	21/32" x 1-9/32"		•
11/32" x 25/32"		•	11/16" x 1-1/16"		•
11/32" x 1-1/32"	•	•	11/16" x 1-5/16"		•
11/32" x 1-3/32"		•	23/32" x 1-1/32"		•
11/32" x 1-9/32"		•	23/32" x 1-3/32"		•
3/8" x 23/32"		•	23/32" x 1-5/32"		•
3/8" x 1-1/32"		•	23/32" x 1-9/32"		•
3/8" x 1-5/16"		•	3/4" x 1-1/16"		•
13/32" x 17/32"		•	3/4" x 1-1/8"		•
13/32" x 25/32"	•	•	3/4" x 1-3/16"		•
13/32" x 1-1/32"	•	•	3/4" x 1-5/16"		•
13/32" x 1-9/32"		•	25/32" x 1-1/32"		•
7/16" x 27/32"		•	25/32" x 1-9/32"		•
7/16" x 1-1/32"		•	13/16" x 1-1/16"		•
7/16" x 1-9/32"		•	13/16" x 1-5/16"		•
15/32" x 19/32"		•	27/32" x 1-1/32"		•
15/32" x 25/32"	•	•	27/32" x 1-3/32"		•
15/32" x 29/32"		•	27/32" x 1-5/32"		•
15/32" x 1-1/32"	•	•	27/32" x 1-9/32"		•
15/32" x 1-3/32"		•	7/8" x 1-1/16"		•
15/32" x 1-9/32"		•	7/8" x 1-1/8"		•
1/2" x 1-1/32"		•	7/8" x 1-3/16"		•
1/2" x 1-1/16"		•	7/8" x 1-5/16"		•
1/2" x 1-5/16"		•	29/32" x 1-9/32"		•
17/32" x 25/32"	•	•	15/16" x 1-5/16"		•
17/32" x 1-1/32"	•	•	15/16" x 1-9/16"		•
17/32" x 1-3/32"		•	31/32" x 1-3/32"		•
17/32" x 1-9/32"		•	31/32" x 1-5/32"		•
9/16" x 13/16"		•	31/32" x 1-9/32"		•
9/16" x 1-1/32"	•	•	1" x 1-1/8"		•
9/16" x 1-1/16"		•	1" x 1-3/16"		•
9/16" x 1-1/8"		•	1" x 1-5/16"		•
9/16" x 1-3/16"		•	1-1/32" x 1-9/32"		•
9/16" x 1-9/32"		•	1-1/16" x 1-5/16"		•
9/16" x 1-5/16"		•	1-3/32" x 1-9/32"		•
19/32" x 25/32"		•	1-1/8" x 1-5/16"		•

KEYWAY & NOTCH OPTIONS

Shaped punches & dies can be located with keyways or notches.

SINGLE KEYWAY

CROSS KEYWAY



ONE NOTCH



TWO NOTCHES



☎ **USA:** 800-451-4342

☎ **International:** 330-296-4342

☎ **Fax:** 800-451-6877

💻 **Visit:** www.clevelandpunch.com

✉ **Email:** sales@clevelandpunch.com

📍 **Address:** 666 Pratt Street, Ravenna, OH 44266

THE WORLD LEADER IN THE TOOLING INDUSTRY

Be a Part of Our Industry's Largest Online Community

Our Instagram, Facebook, and YouTube pages are full of valuable information on how to fully utilize your punching machine. While you're there, share your work and develop new relationships with others like yourself.

📷 ***clevelandpunchdie***

📘 ***cleveland.punch***

📺 ***Cleveland Punch & Die Company***

Copyright © 2019 Cleveland Punch & Die. All rights, including without limitation all copyrights, in and to this catalog are owned solely and exclusively by Cleveland Punch & Die. Reproduction, distribution, or transmission of any part of this catalog, by any means or in any form of media, without the prior express written consent of Cleveland Punch & Die is strictly prohibited. All rights reserved.

Scotchman™ Ironworkers is a registered trademark of Scotchman™ Industries. Use of the Scotchman™ registered trademark and name in this catalog is for informational purposes only. It is the intention of Cleveland Punch & Die to recognize and provide credit to the fullest extent possible.